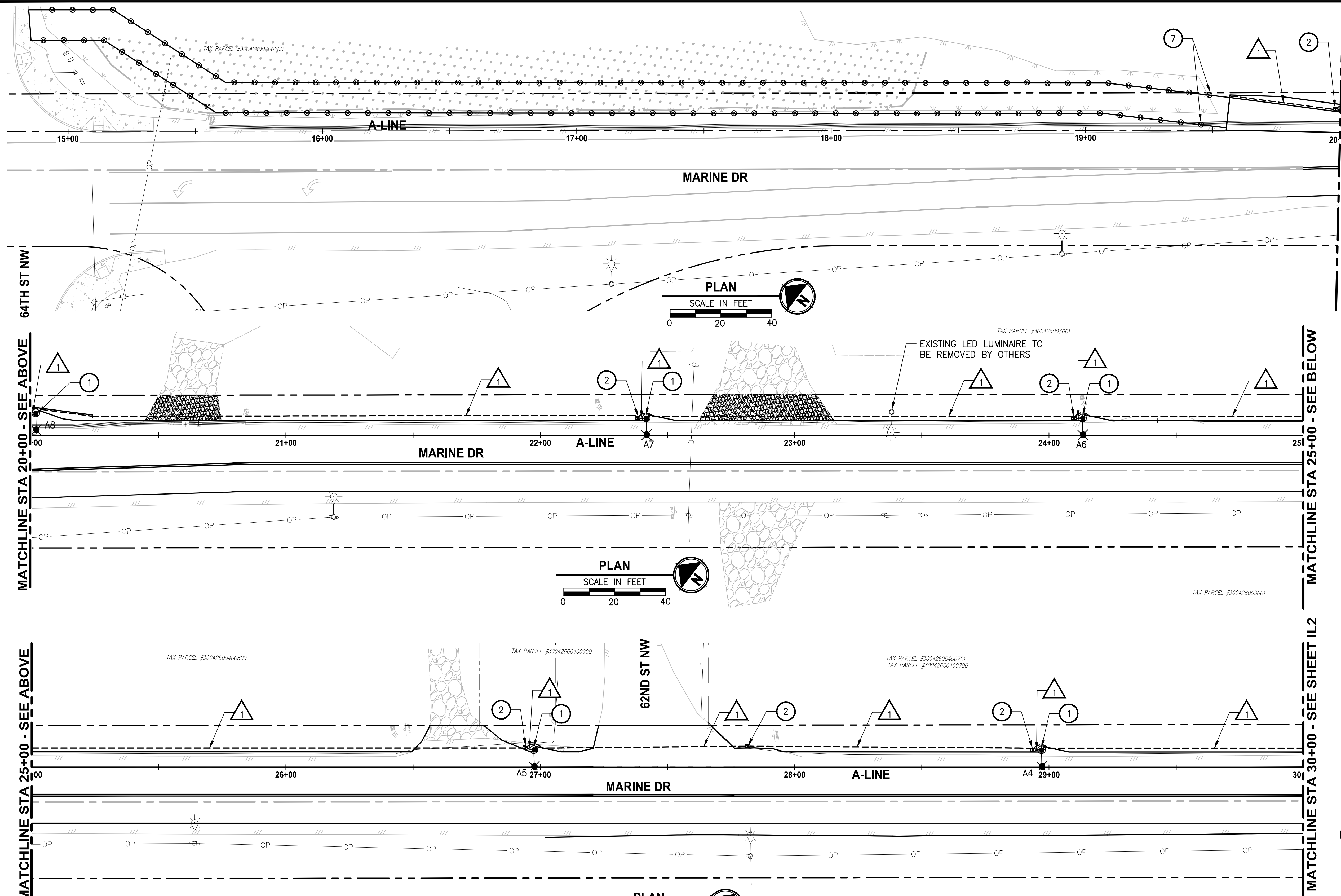


PATH: \\parametrix.com\gmx\PSO\Projects\Clients\1598-Tulalip Tribes\214-1598-078 Marine Drive Shoulder Improvements\995\ca\ADD\Phase 01\Task 0A\DWG\ PLOTTED BY: kendallr DATE: Monday, June 06, 2016 1:21:07 PM LAYOUT: IL1



- CONSTRUCTION NOTES:**
- 1 CONSTRUCT STREET LIGHT STANDARD FOUNDATION, POLE, MAST ARM AND LUMINAIRE HEAD PER LUMINAIRE SCHEDULE ON SHEET IL8.
 - 2 CONSTRUCT TYPE 4 JUNCTION BOX PER WSDOT STANDARD PLAN J-40.20-02.
 - 3 TERMINATE CONDUIT AND WIRE AT PUD INSTALLED SERVICE PEDESTAL AT BASE OF POLE FOR FINAL PUD SERVICE CONNECTION.
 - 4 CONSTRUCT ILLUMINATION SERVICE CABINET FOUNDATION PER DETAIL 4, SHEET IL8. SEE SHEET IL9 FOR SERVICE CABINET DETAILS.
 - 5 CONSTRUCT TYPE 2 JUNCTION BOX PER WSDOT STANDARD PLAN J-40.10-03.
 - 6 CONSTRUCT CONDUITS ACROSS MARINE DRIVE BY DIRECTIONAL BORE.
 - 7 CONSTRUCT LEDPOD 50 BOARDWALK LIGHTS AND CONTROLS IN GRIPPING RAIL OF BOARDWALK. INSTALL LIGHTS AT 8 FT SPACING. POINT OF CONNECTION SHOWN.

- GENERAL NOTES:**
1. UTILITY LOCATION PRIOR TO CONSTRUCTION WILL BE THE RESPONSIBILITY OF THE CONTRACTOR. CONFLICTS ARE TO BE BROUGHT TO THE ATTENTION OF THE ENGINEER FOR RESOLUTION.
 2. ALL JUNCTION BOXES AND CONDUIT RUNS SHALL BE INSTALLED AS SHOWN ON THE PLANS. LOCATIONS SHOWN ARE SCHEMATIC AND THE ENGINEER WILL CONFIRM EXACT LOCATIONS.
 3. ALL EQUIPMENT AND CONDUIT SHALL BE GROUNDED PER NEC REQUIREMENTS.

- LEGEND:**
- STREET LIGHT
 - TYPE 4 JUNCTION BOX
 - TYPE 2 JUNCTION BOX
 - ILLUMINATION SERVICE CABINET
 - CONDUIT
 - WIRE NOTE
 - GRIPPING RAIL LIGHT

WIRE NOTES:

CONDUIT/WIRE SCHEDULE				
CONDUIT #	CONDUIT SIZE	FILL %	ILLUMINATION #8	POWER 3/0
1	2"	6%	2	
2	2"	28%		3
3	2"	10%	4	

- NOTES:**
1. ALL CONDUIT CONTAINING CONDUCTORS EXCEPT FOR SERVICE CONDUIT SHALL CONTAIN ONE #8 AWG GROUND WIRE, NOT SHOW IN THE ABOVE TABLE.
 2. CONDUIT FROM POWER SOURCE TO SERVICE CABINET SHALL BE RIGID GALVANIZED STEEL (RGS). ALL OTHER CONDUIT SHALL BE PVC SCH 80.

SNOHOMISH COUNTY
 TRAFFIC ENGINEER
 APPROVED FOR CONSTRUCTION
 BY: _____
 JIM BLOODGOOD, P.E.



Parametrix
 ENGINEERING · PLANNING · ENVIRONMENTAL SCIENCES
 719 2ND AVENUE, SUITE 200 | SEATTLE, WA 98104
 P 206.394.3700
 WWW.PARAMETRIX.COM

PROJECT NAME
**MARINE DRIVE SHOULDER IMPROVEMENTS
 PHASE 1: 7TH DRIVE NW TO 64TH STREET NW
 THE TULALIP TRIBES**
 TULALIP, WASHINGTON

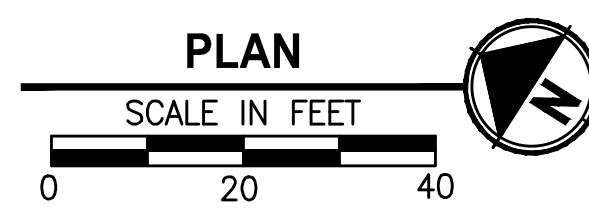
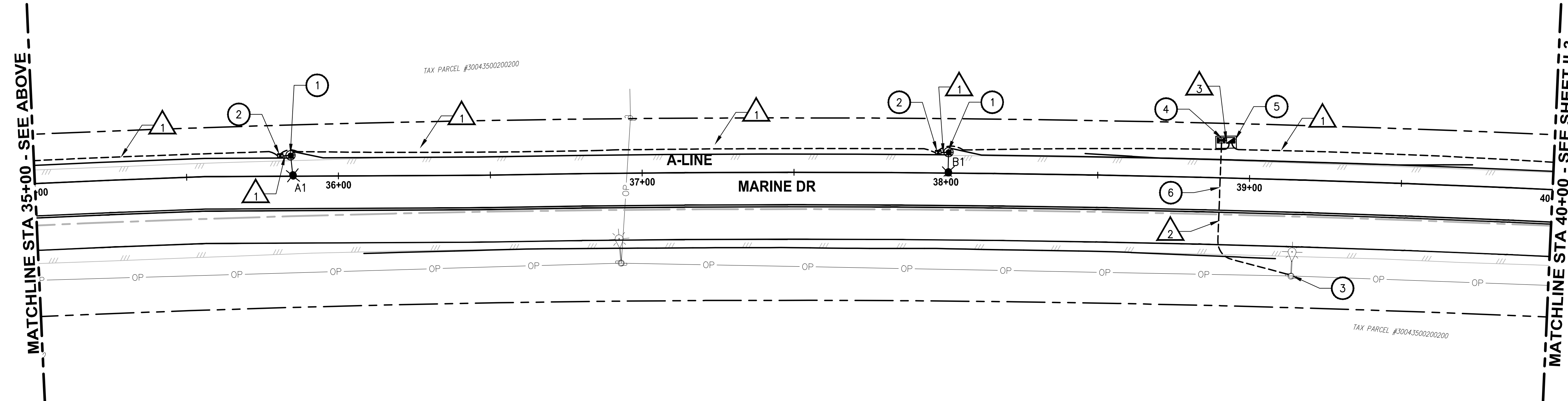
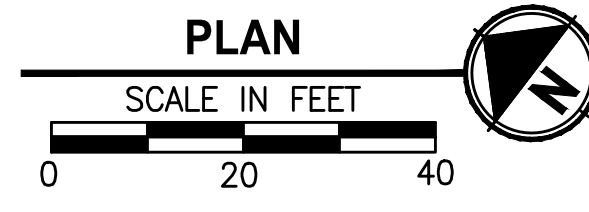
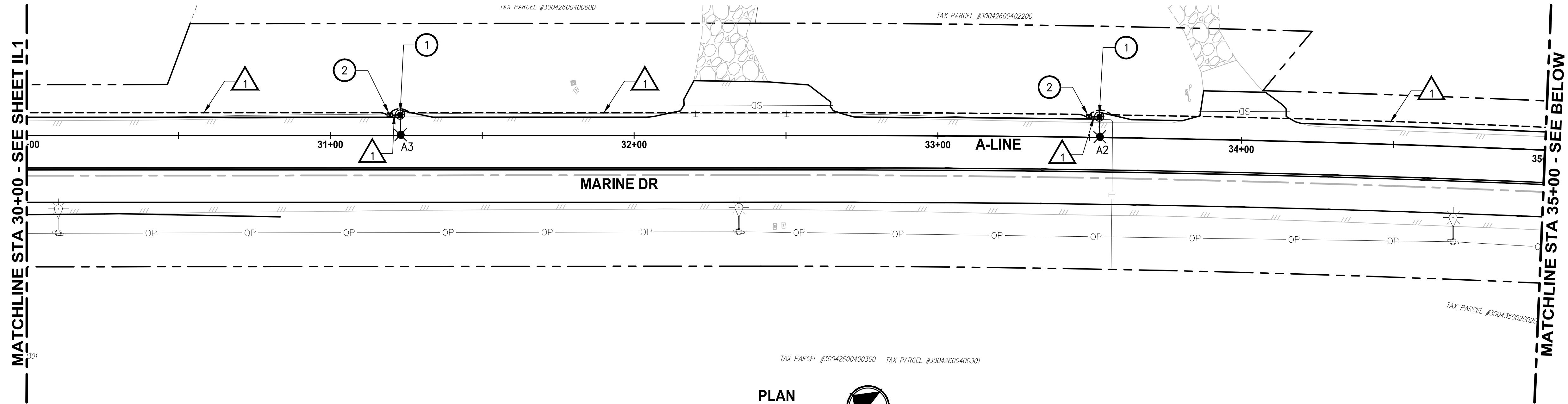
**ILLUMINATION PLAN
 BEGIN PROJECT TO STA 30+00**

Know what's below.
 Call before you dig.
 SHEET NO.
 29 OF 40
IL1

NO.	REVISIONS	DATE	BY	DESIGNED	DRAWN	CHECKED	APPROVED
1	ADDENDUM 1: ILLUMINATION NOTES	6/6/2016	MEK	M. KENDALL	M. KENDALL	E. SCHOTT	A. FISHER

**ONE INCH AT FULL SCALE.
 IF NOT, SCALE ACCORDINGLY**
 FILE NAME
 PS1598078P01T04-IL
 JOB NO.
 594-1598-078 (01/05)
 DATE
 MAY 2016

PATH: \\parametrix.com\jrm\PSO\Projects\Clients\1598-TulipTribes\1598-TulipTribes\214-1598-078 MarineShoulderImprovements\995\cadd\Phase 01\Task 04\DWG\ PLOTTED BY: kendamar DATE: Monday, June 06, 2016 11:21:37 PM LAYOUT: IL2



CONSTRUCTION NOTES:

- 1 CONSTRUCT STREET LIGHT STANDARD FOUNDATION, POLE, MAST ARM AND LUMINAIRE HEAD PER LUMINAIRE SCHEDULE ON SHEET IL8.
- 2 CONSTRUCT TYPE 4 JUNCTION BOX PER WSDOT STANDARD PLAN J-40.20-02.
- 3 TERMINATE CONDUIT AND WIRE AT PUD INSTALLED SERVICE PEDESTAL AT BASE OF POLE FOR FINAL PUD SERVICE CONNECTION.
- 4 CONSTRUCT ILLUMINATION SERVICE CABINET FOUNDATION PER DETAIL 4, SHEET IL8. SEE SHEET IL9 FOR SERVICE CABINET DETAILS.
- 5 CONSTRUCT TYPE 2 JUNCTION BOX PER WSDOT STANDARD PLAN J-40.10-03.
- 6 CONSTRUCT CONDUITS ACROSS MARINE DRIVE BY DIRECTIONAL BORE.

GENERAL NOTES:

1. UTILITY LOCATION PRIOR TO CONSTRUCTION WILL BE THE RESPONSIBILITY OF THE CONTRACTOR. CONFLICTS ARE TO BE BROUGHT TO THE ATTENTION OF THE ENGINEER FOR RESOLUTION.
2. ALL JUNCTION BOXES AND CONDUIT RUNS SHALL BE INSTALLED AS SHOWN ON THE PLANS. LOCATIONS SHOWN ARE SCHEMATIC AND THE ENGINEER WILL CONFIRM EXACT LOCATIONS.
3. ALL EQUIPMENT AND CONDUIT SHALL BE GROUNDED PER NEC REQUIREMENTS.

LEGEND:

- STREET LIGHT
- TYPE 4 JUNCTION BOX
- TYPE 2 JUNCTION BOX
- ILLUMINATION SERVICE CABINET
- CONDUIT
- WIRE NOTE
- GRIPPING RAIL LIGHT

WIRE NOTES:

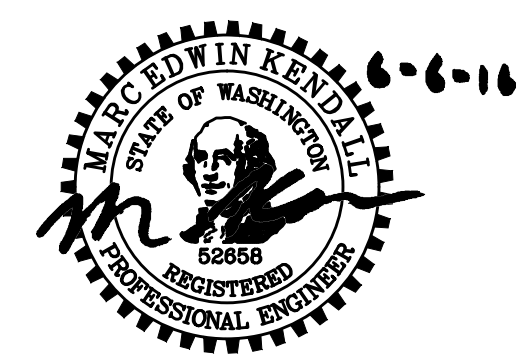
CONDUIT/WIRE SCHEDULE				
#	CONDUIT SIZE	FILL %	ILLUMINATION #8	POWER 3/0
1	2"	6%	2	
2	2"	28%		3
3	2"	10%	4	

- NOTES:**
1. ALL CONDUIT CONTAINING CONDUCTORS EXCEPT FOR SERVICE CONDUIT SHALL CONTAIN ONE #8 AWG GROUND WIRE, NOT SHOW IN THE ABOVE TABLE.
 2. CONDUIT FROM POWER SOURCE TO SERVICE CABINET SHALL BE RIGID GALVANIZED STEEL (RGS). ALL OTHER CONDUIT SHALL BE PVC SCH 80.

SNOHOMISH COUNTY
 TRAFFIC ENGINEER
 APPROVED FOR CONSTRUCTION
 BY _____
 JIM BLOODGOOD, P.E.

NO.	REVISIONS	DATE	BY	DESIGNED	DRAWN	CHECKED	APPROVED
1	ADDENDUM 1: ILLUMINATION NOTE	6/6/2016	MEK	M. KENDALL	M. KENDALL	E. SCHOTT	A. FISHER

ONE INCH AT FULL SCALE. IF NOT, SCALE ACCORDINGLY
 FILE NAME
 PS1598078P01T04-IL
 JOB No.
 54-1598-078 (01/05)
 DATE
 MAY 2016



Parametrix
 ENGINEERING · PLANNING · ENVIRONMENTAL SCIENCES
 719 2ND AVENUE, SUITE 200 | SEATTLE, WA 98104
 P 206.394.3700
 WWW.PARAMETRIX.COM

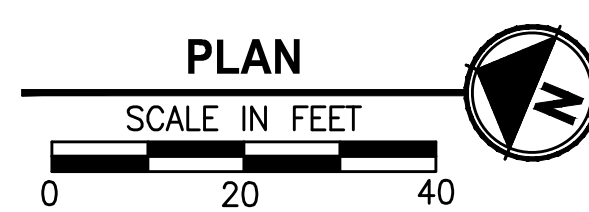
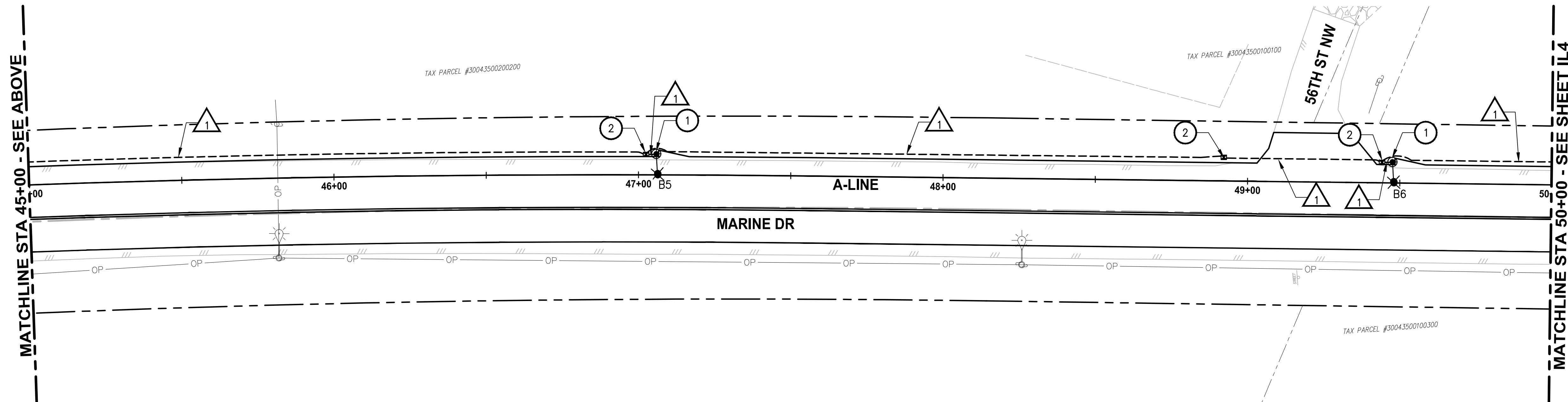
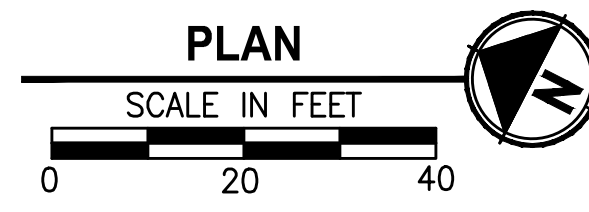
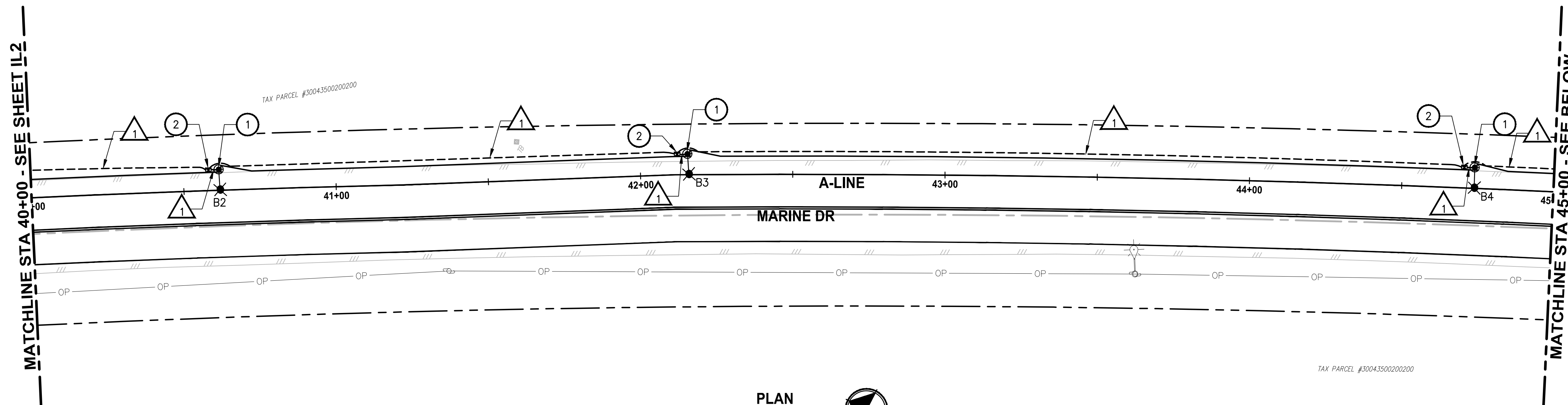
PROJECT NAME
**MARINE DRIVE SHOULDER IMPROVEMENTS
 PHASE 1: 7TH DRIVE NW TO 64TH STREET NW
 THE TULALIP TRIBES**
 TULALIP, WASHINGTON

**ILLUMINATION PLAN
 STA 30+00 TO STA 40+00**

SHEET NO.
 30 OF 40
IL2



PATH: \\pccorparametrix.com\jrm\PSO\Projects\Clients\1598-TulalipTribes\1598-TulalipTribes\214-1598-078-MarineDriveShoulderImprovements\CADD\Phase 01\Task 04\DWG\ LAYOUT: IL3 PLOTTED BY: kendamar DATE: Monday, June 06, 2016 1:22:04 PM



- CONSTRUCTION NOTES:**
- 1 CONSTRUCT STREET LIGHT STANDARD FOUNDATION, POLE, MAST ARM AND LUMINAIRE HEAD PER LUMINAIRE SCHEDULE ON SHEET IL8.
 - 2 CONSTRUCT TYPE 4 JUNCTION BOX PER WSDOT STANDARD PLAN J-40.20-02.
 - 3 TERMINATE CONDUIT AND WIRE AT PUD INSTALLED SERVICE PEDESTAL AT BASE OF POLE FOR FINAL PUD SERVICE CONNECTION.
 - 4 CONSTRUCT ILLUMINATION SERVICE CABINET FOUNDATION PER DETAIL 4, SHEET IL8. SEE SHEET IL9 FOR SERVICE CABINET DETAILS.
 - 5 CONSTRUCT TYPE 2 JUNCTION BOX PER WSDOT STANDARD PLAN J-40.10-03.
 - 6 CONSTRUCT CONDUITS ACROSS MARINE DRIVE BY DIRECTIONAL BORE.

- GENERAL NOTES:**
1. UTILITY LOCATION PRIOR TO CONSTRUCTION WILL BE THE RESPONSIBILITY OF THE CONTRACTOR. CONFLICTS ARE TO BE BROUGHT TO THE ATTENTION OF THE ENGINEER FOR RESOLUTION.
 2. ALL JUNCTION BOXES AND CONDUIT RUNS SHALL BE INSTALLED AS SHOWN ON THE PLANS. LOCATIONS SHOWN ARE SCHEMATIC AND THE ENGINEER WILL CONFIRM EXACT LOCATIONS.
 3. ALL EQUIPMENT AND CONDUIT SHALL BE GROUNDED PER NEC REQUIREMENTS.

- LEGEND:**
- STREET LIGHT
 - TYPE 4 JUNCTION BOX
 - TYPE 2 JUNCTION BOX
 - ILLUMINATION SERVICE CABINET
 - CONDUIT
 - WIRE NOTE
 - GRIPPING RAIL LIGHT

WIRE NOTES:

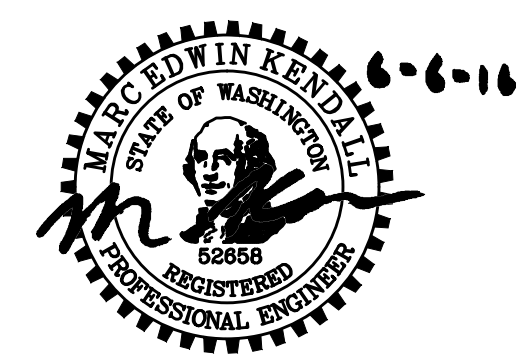
CONDUIT/WIRE SCHEDULE				
#	CONDUIT SIZE	FILL %	ILLUMINATION #8	POWER 3/0
1	2"	6%	2	
2	2"	28%		3
3	2"	10%	4	

- NOTES:**
1. ALL CONDUIT CONTAINING CONDUCTORS EXCEPT FOR SERVICE CONDUIT SHALL CONTAIN ONE #8 AWG GROUND WIRE, NOT SHOW IN THE ABOVE TABLE.
 2. CONDUIT FROM POWER SOURCE TO SERVICE CABINET SHALL BE RIGID GALVANIZED STEEL (RGS). ALL OTHER CONDUIT SHALL BE PVC SCH 80.

SNOHOMISH COUNTY
 TRAFFIC ENGINEER
 APPROVED FOR CONSTRUCTION
 BY: _____
 JIM BLOODGOOD, P.E.

NO.	REVISIONS	DATE	BY	DESIGNED	DRAWN	CHECKED	APPROVED
1	ADDENDUM 1: ILLUMINATION NOTE	6/6/2016	MEK	M. KENDALL	M. KENDALL	E. SCHOTT	A. FISHER

ONE INCH AT FULL SCALE. IF NOT, SCALE ACCORDINGLY
 FILE NAME: PS1598078P01T04-IL
 JOB No: 54-1598-078 (01/05)
 DATE: MAY 2016



Parametrix
 ENGINEERING · PLANNING · ENVIRONMENTAL SCIENCES
 719 2ND AVENUE, SUITE 200 | SEATTLE, WA 98104
 P 206.394.3700
 WWW.PARAMETRIX.COM

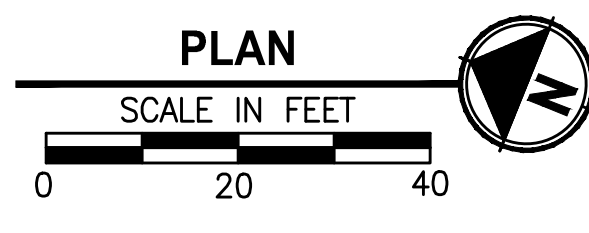
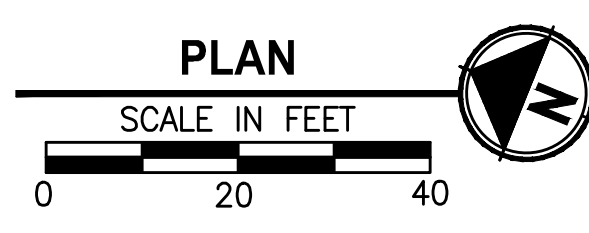
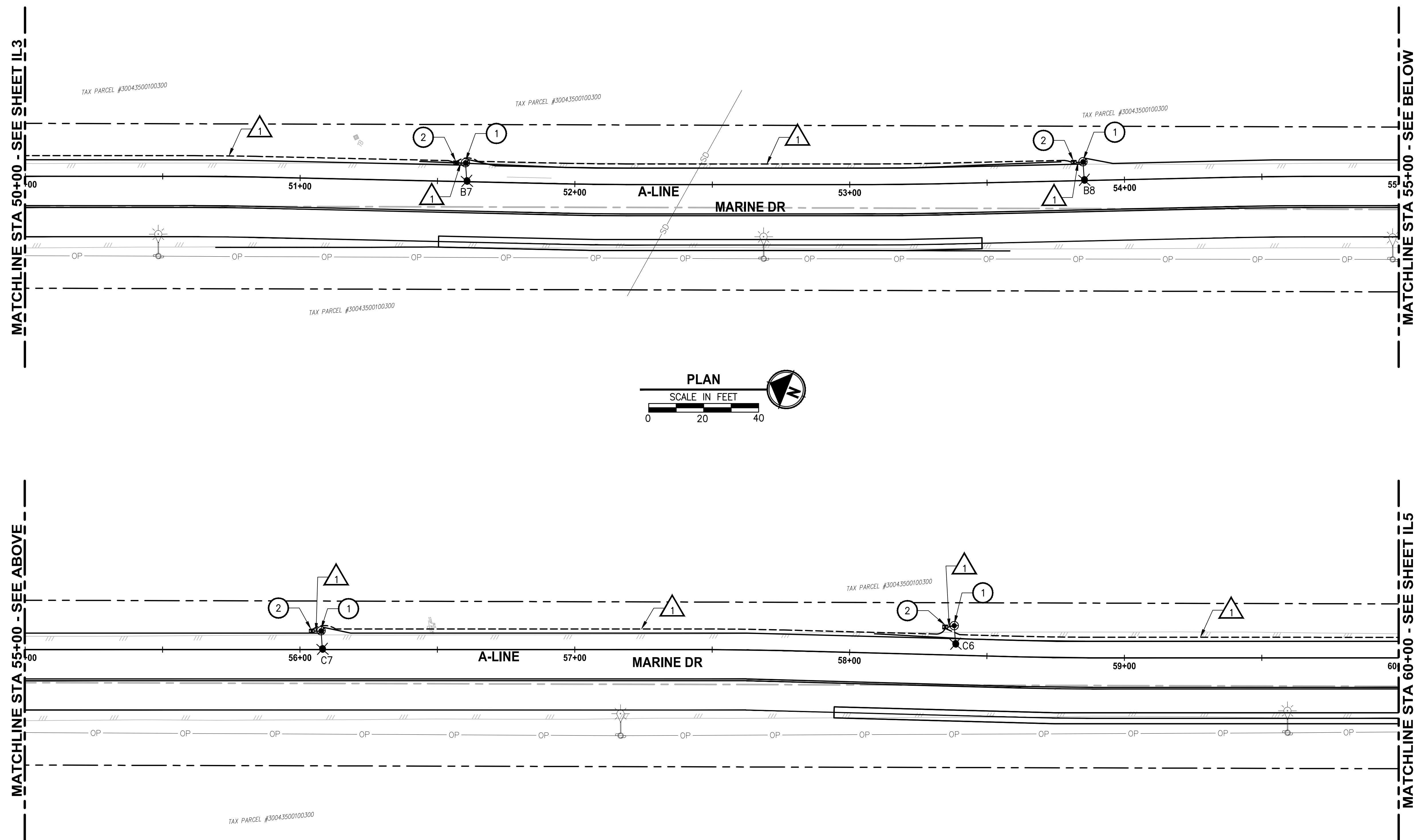
PROJECT NAME
**MARINE DRIVE SHOULDER IMPROVEMENTS
 PHASE 1: 7TH DRIVE NW TO 64TH STREET NW
 THE TULALIP TRIBES**
 TULALIP, WASHINGTON

**ILLUMINATION PLAN
 STA 40+00 TO STA 50+00**

SHEET NO.
 31 OF 40
IL3



PATH: \\parametrix.com\jrm\PSO\Projects\Clients\1598-TulipTribes\1598-TulipTribes\214-1598-078 MarineDrShoulderImprove\995\ca\CADD\Phase 01\Task 04\DWG\ PLOTTED BY: kendamar DATE: Monday, June 06, 2016 1:22:29 PM LAYOUT: IL4



- CONSTRUCTION NOTES:**
- 1 CONSTRUCT STREET LIGHT STANDARD FOUNDATION, POLE, MAST ARM AND LUMINAIRE HEAD PER LUMINAIRE SCHEDULE ON SHEET IL8.
 - 2 CONSTRUCT TYPE 4 JUNCTION BOX PER WSDOT STANDARD PLAN J-40.20-02.
 - 3 TERMINATE CONDUIT AND WIRE AT PUD INSTALLED SERVICE PEDESTAL AT BASE OF POLE FOR FINAL PUD SERVICE CONNECTION.
 - 4 CONSTRUCT ILLUMINATION SERVICE CABINET FOUNDATION PER DETAIL 4, SHEET IL8. SEE SHEET IL9 FOR SERVICE CABINET DETAILS.
 - 5 CONSTRUCT TYPE 2 JUNCTION BOX PER WSDOT STANDARD PLAN J-40.10-03.
 - 6 CONSTRUCT CONDUITS ACROSS MARINE DRIVE BY DIRECTIONAL BORE.

- GENERAL NOTES:**
1. UTILITY LOCATION PRIOR TO CONSTRUCTION WILL BE THE RESPONSIBILITY OF THE CONTRACTOR. CONFLICTS ARE TO BE BROUGHT TO THE ATTENTION OF THE ENGINEER FOR RESOLUTION.
 2. ALL JUNCTION BOXES AND CONDUIT RUNS SHALL BE INSTALLED AS SHOWN ON THE PLANS. LOCATIONS SHOWN ARE SCHEMATIC AND THE ENGINEER WILL CONFIRM EXACT LOCATIONS.
 3. ALL EQUIPMENT AND CONDUIT SHALL BE GROUNDED PER NEC REQUIREMENTS.

- LEGEND:**
- STREET LIGHT
 - TYPE 4 JUNCTION BOX
 - TYPE 2 JUNCTION BOX
 - ILLUMINATION SERVICE CABINET
 - CONDUIT
 - WIRE NOTE
 - GRIPPING RAIL LIGHT

WIRE NOTES:

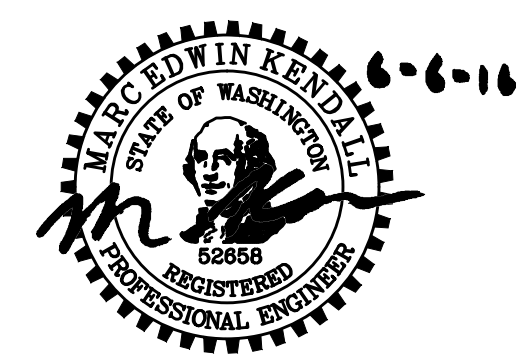
CONDUIT/WIRE SCHEDULE				
#	CONDUIT SIZE	FILL %	ILLUMINATION #8	POWER 3/0
1	2"	6%	2	
2	2"	28%		3
3	2"	10%	4	

- NOTES:**
1. ALL CONDUIT CONTAINING CONDUCTORS EXCEPT FOR SERVICE CONDUIT SHALL CONTAIN ONE #8 AWG GROUND WIRE, NOT SHOW IN THE ABOVE TABLE.
 2. CONDUIT FROM POWER SOURCE TO SERVICE CABINET SHALL BE RIGID GALVANIZED STEEL (RGS). ALL OTHER CONDUIT SHALL BE PVC SCH 80.

SNOHOMISH COUNTY
 TRAFFIC ENGINEER
 APPROVED FOR CONSTRUCTION
 BY _____
 JIM BLOODGOOD, P.E.

NO.	REVISIONS	DATE	BY	DESIGNED	DRAWN	CHECKED	APPROVED
1	ADDENDUM 1: ILLUMINATION NOTE	6/6/2016	MEK	M. KENDALL	M. KENDALL	E. SCHOTT	A. FISHER

ONE INCH AT FULL SCALE. IF NOT, SCALE ACCORDINGLY.
 FILE NAME
 PS1598078P01T04-IL
 JOB No.
 54-1598-078 (01/05)
 DATE
 MAY 2016



Parametrix
 ENGINEERING · PLANNING · ENVIRONMENTAL SCIENCES
 719 2ND AVENUE, SUITE 200 | SEATTLE, WA 98104
 P 206.394.3700
 WWW.PARAMETRIX.COM

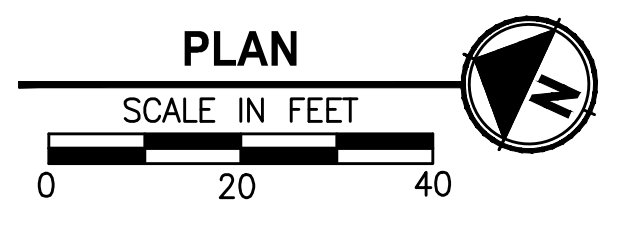
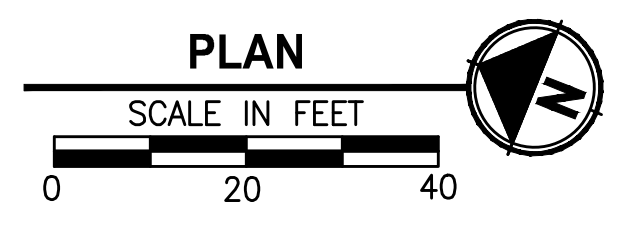
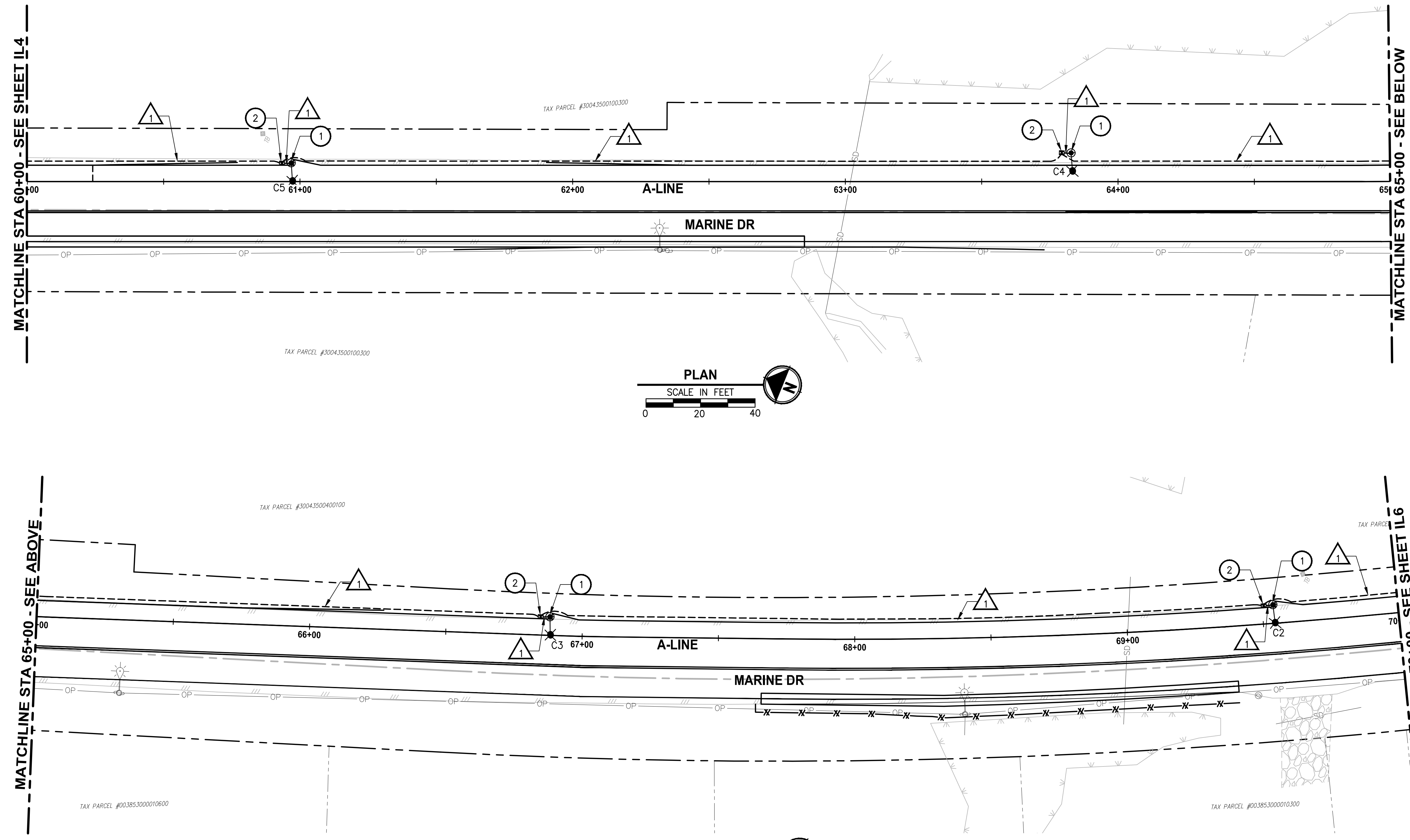
PROJECT NAME
MARINE DRIVE SHOULDER IMPROVEMENTS
PHASE 1: 7TH DRIVE NW TO 64TH STREET NW
THE TULALIP TRIBES
 TULALIP, WASHINGTON

ILLUMINATION PLAN
STA 50+00 TO STA 60+00

SHEET NO.
 32 OF 40
IL4



PATH: \\parametrix.com\jrm\PSO\Projects\Clients\1598-TulipTribes\1598-TulipTribes\214-1598-078 MarineDriveShoulderImprovements\CAD\Phase 01\Task 04\DWG\ LAYOUT: IL5
 PLOTTED BY: kendamar DATE: Monday, June 06, 2016 1:22:55 PM



- CONSTRUCTION NOTES:**
- 1 CONSTRUCT STREET LIGHT STANDARD FOUNDATION, POLE, MAST ARM AND LUMINAIRE HEAD PER LUMINAIRE SCHEDULE ON SHEET IL8.
 - 2 CONSTRUCT TYPE 4 JUNCTION BOX PER WSDOT STANDARD PLAN J-40.20-02.
 - 3 TERMINATE CONDUIT AND WIRE AT PUD INSTALLED SERVICE PEDESTAL AT BASE OF POLE FOR FINAL PUD SERVICE CONNECTION.
 - 4 CONSTRUCT ILLUMINATION SERVICE CABINET FOUNDATION PER DETAIL 4, SHEET IL8. SEE SHEET IL9 FOR SERVICE CABINET DETAILS.
 - 5 CONSTRUCT TYPE 2 JUNCTION BOX PER WSDOT STANDARD PLAN J-40.10-03.
 - 6 CONSTRUCT CONDUITS ACROSS MARINE DRIVE BY DIRECTIONAL BORE.

- GENERAL NOTES:**
1. UTILITY LOCATION PRIOR TO CONSTRUCTION WILL BE THE RESPONSIBILITY OF THE CONTRACTOR. CONFLICTS ARE TO BE BROUGHT TO THE ATTENTION OF THE ENGINEER FOR RESOLUTION.
 2. ALL JUNCTION BOXES AND CONDUIT RUNS SHALL BE INSTALLED AS SHOWN ON THE PLANS. LOCATIONS SHOWN ARE SCHEMATIC AND THE ENGINEER WILL CONFIRM EXACT LOCATIONS.
 3. ALL EQUIPMENT AND CONDUIT SHALL BE GROUNDED PER NEC REQUIREMENTS.

- LEGEND:**
- STREET LIGHT
 - TYPE 4 JUNCTION BOX
 - TYPE 2 JUNCTION BOX
 - ILLUMINATION SERVICE CABINET
 - CONDUIT
 - WIRE NOTE
 - GRIPPING RAIL LIGHT

WIRE NOTES:

CONDUIT/WIRE SCHEDULE				
#	CONDUIT SIZE	FILL %	ILLUMINATION #8	POWER 3/0
1	2"	6%	2	
2	2"	28%		3
3	2"	10%	4	

- NOTES:**
1. ALL CONDUIT CONTAINING CONDUCTORS EXCEPT FOR SERVICE CONDUIT SHALL CONTAIN ONE #8 AWG GROUND WIRE, NOT SHOW IN THE ABOVE TABLE.
 2. CONDUIT FROM POWER SOURCE TO SERVICE CABINET SHALL BE RIGID GALVANIZED STEEL (RGS). ALL OTHER CONDUIT SHALL BE PVC SCH 80.

SNOHOMISH COUNTY
 TRAFFIC ENGINEER
 APPROVED FOR CONSTRUCTION
 BY _____
 JIM BLOODGOOD, P.E.



Parametrix
 ENGINEERING · PLANNING · ENVIRONMENTAL SCIENCES
 719 2ND AVENUE, SUITE 200 | SEATTLE, WA 98104
 P 206.394.3700
 WWW.PARAMETRIX.COM

PROJECT NAME
**MARINE DRIVE SHOULDER IMPROVEMENTS
 PHASE 1: 7TH DRIVE NW TO 64TH STREET NW
 THE TULALIP TRIBES**
 TULALIP, WASHINGTON

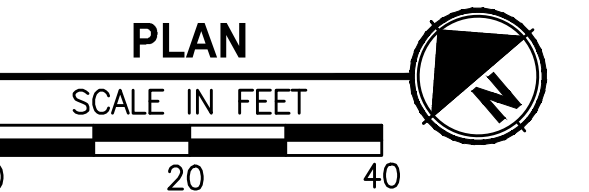
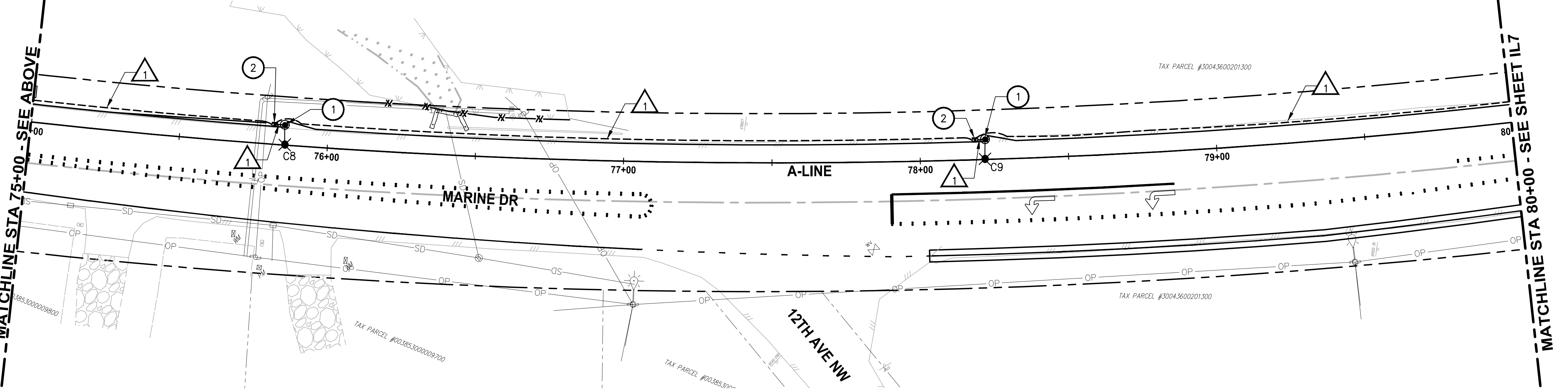
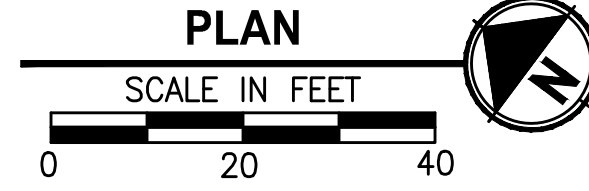
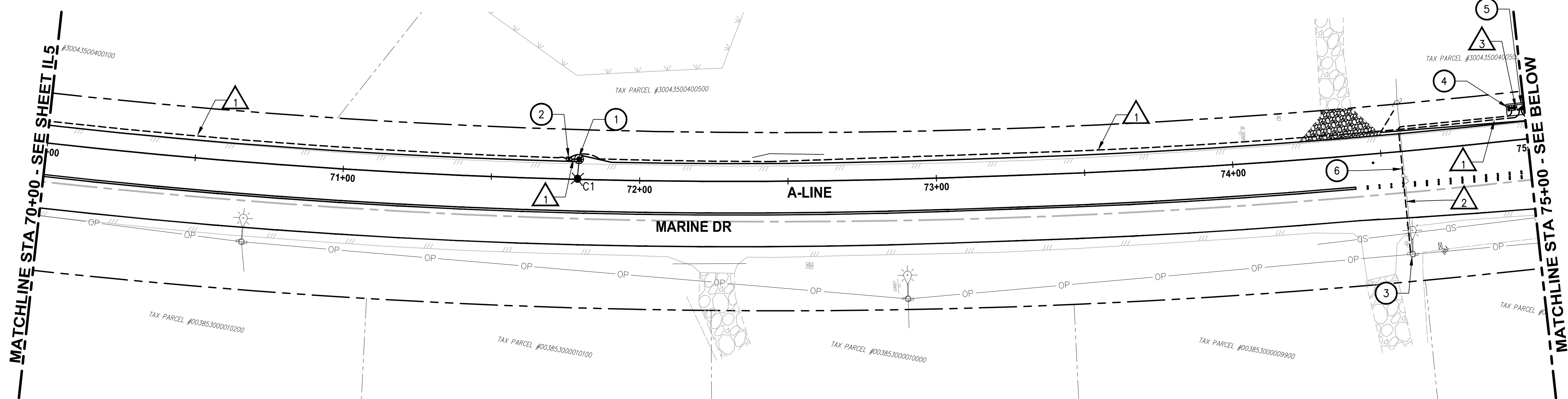
ILLUMINATION PLAN
STA 60+00 TO STA 70+00

Know what's below.
 Call before you dig.
 SHEET NO.
 33 OF 40
IL5

NO.	REVISIONS	DATE	BY	DESIGNED	DRAWN	CHECKED	APPROVED
1	ADDENDUM 1: ILLUMINATION NOTE	6/6/2016	MEK	M. KENDALL	M. KENDALL	E. SCHOTT	A. FISHER

ONE INCH AT FULL SCALE.
 IF NOT, SCALE ACCORDINGLY
 FILE NAME
 PS1598078P01T04-IL
 JOB NO.
 54-1598-078 (01/05)
 DATE
 MAY 2016

LAYOUT: IL6
 PATH: \\parametrix.com\jrm\PSO\Projects\Clients\1598-TulipTribes\1598-TulipTribes\214-1598-078-MarineDriveShoulderImprovements\CAD\Drawings\Task 04\DWG\



- CONSTRUCTION NOTES:**
- 1 CONSTRUCT STREET LIGHT STANDARD FOUNDATION, POLE, MAST ARM AND LUMINAIRE HEAD PER LUMINAIRE SCHEDULE ON SHEET IL8.
 - 2 CONSTRUCT TYPE 4 JUNCTION BOX PER WSDOT STANDARD PLAN J-40.20-02.
 - 3 TERMINATE CONDUIT AND WIRE AT PUD INSTALLED SERVICE PEDESTAL AT BASE OF POLE FOR FINAL PUD SERVICE CONNECTION.
 - 4 CONSTRUCT ILLUMINATION SERVICE CABINET FOUNDATION PER DETAIL 4, SHEET IL8. SEE SHEET IL9 FOR SERVICE CABINET DETAILS.
 - 5 CONSTRUCT TYPE 2 JUNCTION BOX PER WSDOT STANDARD PLAN J-40.10-03.
 - 6 CONSTRUCT CONDUITS ACROSS MARINE DRIVE BY DIRECTIONAL BORE.

- GENERAL NOTES:**
1. UTILITY LOCATION PRIOR TO CONSTRUCTION WILL BE THE RESPONSIBILITY OF THE CONTRACTOR. CONFLICTS ARE TO BE BROUGHT TO THE ATTENTION OF THE ENGINEER FOR RESOLUTION.
 2. ALL JUNCTION BOXES AND CONDUIT RUNS SHALL BE INSTALLED AS SHOWN ON THE PLANS. LOCATIONS SHOWN ARE SCHEMATIC AND THE ENGINEER WILL CONFIRM EXACT LOCATIONS.
 3. ALL EQUIPMENT AND CONDUIT SHALL BE GROUNDED PER NEC REQUIREMENTS.

- LEGEND:**
- STREET LIGHT
 - TYPE 4 JUNCTION BOX
 - TYPE 2 JUNCTION BOX
 - ILLUMINATION SERVICE CABINET
 - CONDUIT
 - WIRE NOTE
 - GRIPPING RAIL LIGHT

WIRE NOTES:

CONDUIT/WIRE SCHEDULE				
#	CONDUIT SIZE	FILL %	ILLUMINATION #8	POWER 3/0
1	2"	6%	2	
2	2"	28%		3
3	2"	10%	4	

- NOTES:**
1. ALL CONDUIT CONTAINING CONDUCTORS EXCEPT FOR SERVICE CONDUIT SHALL CONTAIN ONE #8 AWG GROUND WIRE, NOT SHOW IN THE ABOVE TABLE.
 2. CONDUIT FROM POWER SOURCE TO SERVICE CABINET SHALL BE RIGID GALVANIZED STEEL (RGS). ALL OTHER CONDUIT SHALL BE PVC SCH 80.

SNOHOMISH COUNTY
 TRAFFIC ENGINEER
 APPROVED FOR CONSTRUCTION
 BY _____
 JIM BLOODGOOD, P.E.



Parametrix
 ENGINEERING · PLANNING · ENVIRONMENTAL SCIENCES
 719 2ND AVENUE, SUITE 200 | SEATTLE, WA 98104
 P 206.394.3700
 WWW.PARAMETRIX.COM

PROJECT NAME
MARINE DRIVE SHOULDER IMPROVEMENTS
PHASE 1: 7TH DRIVE NW TO 64TH STREET NW
THE TULALIP TRIBES
 TULALIP, WASHINGTON

ILLUMINATION PLAN
STA 70+00 TO STA 80+00

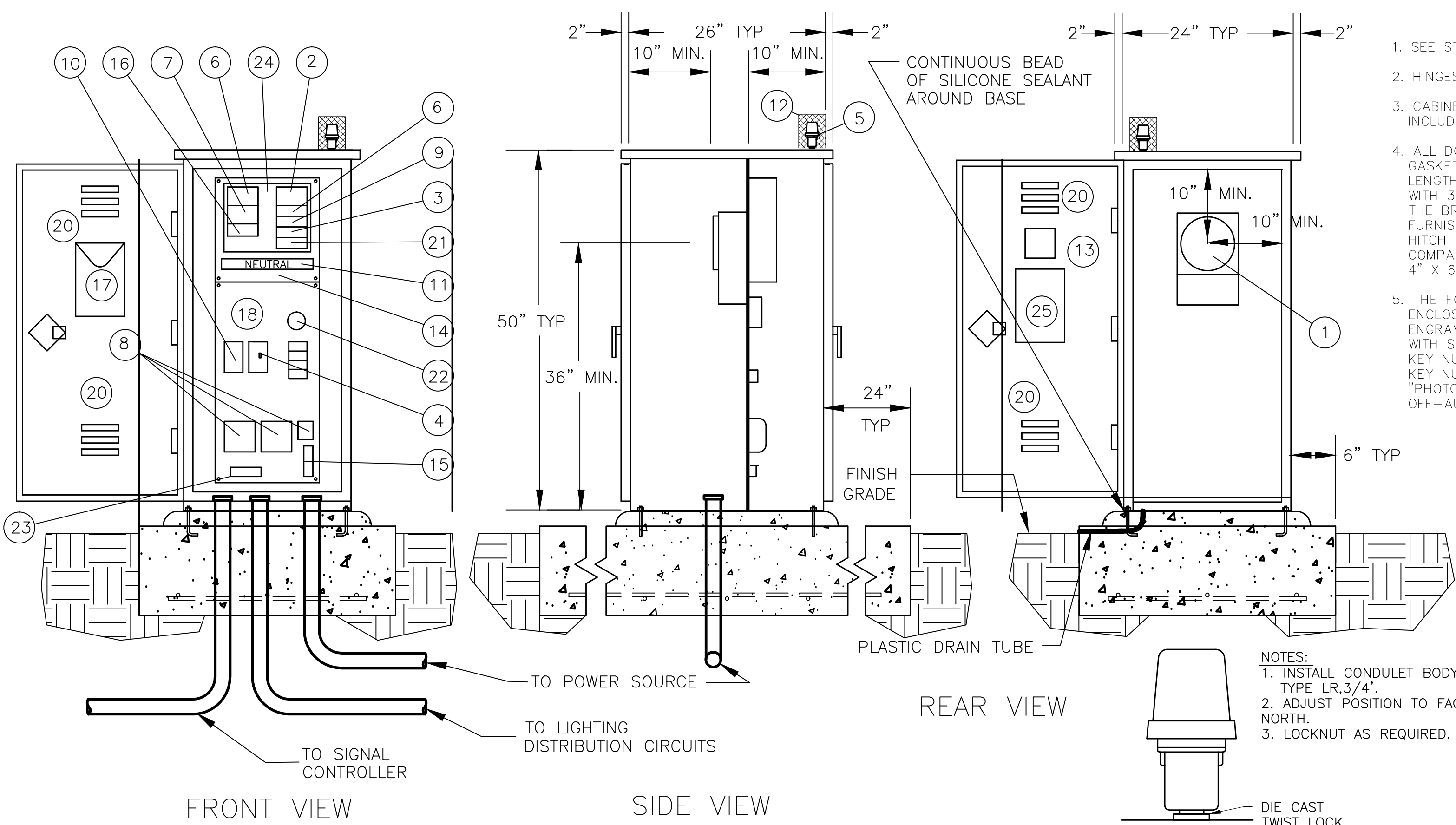
SHEET NO.
 34 OF 40
IL6

NO.	REVISIONS	DATE	BY	DESIGNED	DRAWN	CHECKED	APPROVED
1	ADDENDUM 1: ILLUMINATION NOTE	6/6/2016	MEK	M. KENDALL	M. KENDALL	E. SCHOTT	A. FISHER

ONE INCH AT FULL SCALE.
IF NOT, SCALE ACCORDINGLY
 FILE NAME
 PS1598078P01T04-IL
 JOB No.
 54-1598-078 (01/05)
 DATE
 MAY 2016



PLOTED BY: kendorr DATE: Monday, June 06, 2016 1:24:25 PM
 PATH: \\parametrix.com\jrm\PSO\Projects\Clients\1598-Tulalip Tribes\214-1598-078 Marine Drive Shoulder Improvements\995\cadd\Phase 01\Task 04\DWG\



- SEE STD. SPECIFICATION 9-29.24, SERVICE CABINETS.
- HINGES SHALL HAVE BRASS PINS.
- CABINETS SHALL BE RATED NEMA 3R AND SHALL INCLUDE TWO RAINTIGHT, SCREENED AND GASKETED VENTS.
- ALL DOORS SHALL BE FULLY CLOSED CELL NEOPRENE GASKETED. ATTACHED BY CONCEALED LIFT OFF FULL LENGTH STAINLESS STEEL PIANO HINGES AND PROVIDED WITH 3 POINT LATCH PADLOCKABLE VAULT HANDLES. THE BREAKER PANEL COMPARTMENT DOOR SHALL BE FURNISHED WITH A THREE-POINT, SPRING-LOADED HITCH AND A BEST CX CONSTRUCTION CORE. THE METER COMPARTMENT DOOR SHALL BE PROVIDED WITH TWO 4" X 6" POLISHED WIRE GLASS WINDOWS.
- THE FOLLOWING EQUIPMENT WITHIN THE SERVICE ENCLOSURE SHALL HAVE AN APPROPRIATELY ENGRAVED PHENOLIC NAME PLATE ATTACHED WITH SCREWS OR RIVETS.
KEY NUMBERS 2, 3, 4, 7, 9, 11, 15 AND 19.
KEY NUMBER 4 NAME PLATE SHALL READ: "PHOTOCELL BYPASS TEST ON" AND "PHOTOCELL TEST OFF-AUTOMATIC". SEE SERVICE CABINET DETAIL.
- METERING ARRANGEMENTS VARY WITH DIFFERENT SERVING UTILITIES. THE UTILITY MAY REQUIRE METER BASE MOUNTING IN THE ENCLOSURE, ON THE SIDE OR ON THE BACK OF THE ENCLOSURE. THE UTILITY MAY REQUIRE THE DIMENSION BETWEEN THE DOOR AND THE FRONT OF THE SAFETY SOCKET BOX DETAIL. THE CONTRACTOR SHALL VERIFY THE SERVING UTILITY'S REQUIREMENTS PRIOR TO FABRICATION OF AND INSTALLING THE SERVICE EQUIPMENT.
- DIMENSIONS SHOWN ARE MINIMUM AND SHALL BE ADJUSTED TO ACCOMMODATE THE VARIOUS SIZES OF EQUIPMENT INSTALLED.
- ALL BUSSWORK SHALL BE HIGH GRADE COPPER AND SHALL EQUAL OR EXCEED THE MAIN BREAKER RATING. ALL BREAKERS SHALL BOLT ONTO THE BUSSWORK. JUMPERING OF BREAKERS SHALL NOT BE ALLOWED. BUSSWORK SHALL ACCOMMODATE ALL FUTURE EQUIPMENT AS SHOWN IN THE BREAKER SCHEDULE.
- THE PHOTOCELL UNIT SHALL BE CENTERED IN THE PHOTOCELL ENCLOSURE TO PERMIT 360 DEGREE ROTATION OF THE PHOTOCELL WITHOUT REMOVAL OF THE PHOTOCELL UNIT OR PHOTOCELL ENCLOSURE.

GENERAL NOTES

- ALL INTERNAL WIRE RUNS SHALL BE IDENTIFIED WITH "TO-FROM" CODED TAGS LABELED WITH THE CODE LETTERS AND/OR NUMBERS SHOWN ON THE SCHEDULES APPROVED PVC OR POLYOLEFIN WIRE MARKING SLEEVES SHALL BE USED.
- ALL NUTS, BOLTS AND WASHERS USED FOR MOUNTING THE PHOTOCELL ENCLOSURE SHALL BE STAINLESS STEEL.
- A 1% TOLERANCE IS ALLOWED FOR ALL DIMENSIONS.
- THE PHOTOCELL CIRCUIT SHALL BE INSTALLED IN FLEX CONDUIT WITHIN THE METER COMPARTMENT.
- INSTALL CONDUIT COUPLINGS ON ALL CONDUITS. PLACE COUPLINGS FLUSH WITH THE TOP OF THE CONCRETE FOUNDATION.
- SEE THIS PLAN FOR BREAKER SCHEDULE.
- SEAL CABINET TO FOUNDATION WITH A 1/2" BEAD OF SILICONE. APPLY SILICONE TO DRY SURFACE ONLY.
- THE METER BASE PORTION OF THIS SERVICE WAS DESIGNED TO MEET METERING PORTION OF EUSERC DRAWING 309 REQUIREMENTS.

LEGEND

- METER BASE PER SERVING UTILITY REQUIREMENTS. AS A MINIMUM, THE METER BASE SHALL BE SAFETY SOCKET BOX WITH FACTORY INSTALLED TEST BYPASS FACILITY THAT MEETS THE REQUIREMENTS OF THE EUSERC DRAWING 305.
- MAIN BREAKER (SEE BREAKER SCHEDULE).
- PHOTOCELL BREAKER (SPDT 10 AMP-120/240 VOLT).
- TEST SWITCH (SPDT 10 AMP-120/240 VOLT "T" RATED).
- PHOTOELECTRIC CONTROL, STD SPEC. 9-29.11(2).
- ILLUMINATION BREAKER (SEE BREAKER SCHEDULE).
- SIGNAL BREAKER (SEE BREAKER SCHEDULE).
- CONTACTOR (SEE BREAKER SCHEDULE).
- RECEPTACLE BREAKER (SPST 20 AMP-120/240 VOLT).
- RECEPTACLE GROUNDED (GFCI 20 AMP-125 VOLT).
- NEUTRAL BUSS, 10 LUG COPPER, #2-#14.
- PHOTOCELL ENCLOSURE-ENCLOSURE TO BE FABRICATED FROM 5/8" EXPANDED STEEL MESH WITH WELDED SEAMS AND MOUNTING FLANGES. HOT DIP GALVANIZED AFTER FABRICATION. TYPE 5052-H32 ALUMINUM WITH 5/5" X 5/8" OPENINGS EQUIVALENT TO 5/8" EXPANDED STEEL MESH MAY BE USED AS ALTERNATIVE MATERIAL. SEE PHOTOCELL ENCLOSURE MOUNTING DETAILS. STANDARD PLAN J-3b.
- HINGED FRONT FACING DOOR WITH 4" X 4" MINIMUM POLISHED WIRE GLASS WINDOW.
- HINGED DEAD FRONT WITH 1/4 TURN FASTENERS OR SLIDE LATCH.
- CABINET MAIN BONDING JUMPER. BUSS SHALL BE A LUG TINNED COPPER. SEE CABINET MAIN BONDING JUMPER DETAIL, STANDARD PLAN J-3b.
- SIGN LIGHT BREAKER (DPST 20 AMP-120/240 VOLT).
- METAL WIRING DIAGRAM HOLDER.
- REMOVABLE EQUIPMENT MOUNTING PAN.
- NOT USED.
- SCREENED VENTS, 2 REQUIRED, 1 EACH SIDE, LOUVERED PLATES.
- HEATER BREAKER (SPST 15 AMP-120/240 VOLT).
- THERMOSTAT, 40 DEGREE F CLOSURE-3 DIFFERENTIAL.
- STRIP HEATER (100 WATT NORMAL), WITH TERMINAL STRIP COVER.
- 24 CIRCUIT PANEL BOARD-MINIMUM SIZE WITH SEPARATE MAIN BREAKER.
- LABEL CABINET WITH BUSSWORK RATING.

**SERVICE CABINET TYPE D MODIFIED
DETAILS FOR STAND ALONE**

N.T.C.

REAR VIEW

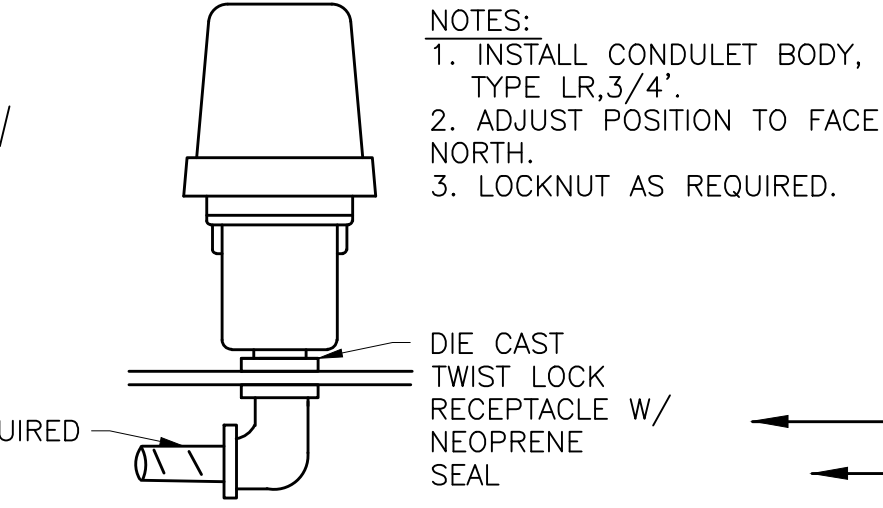


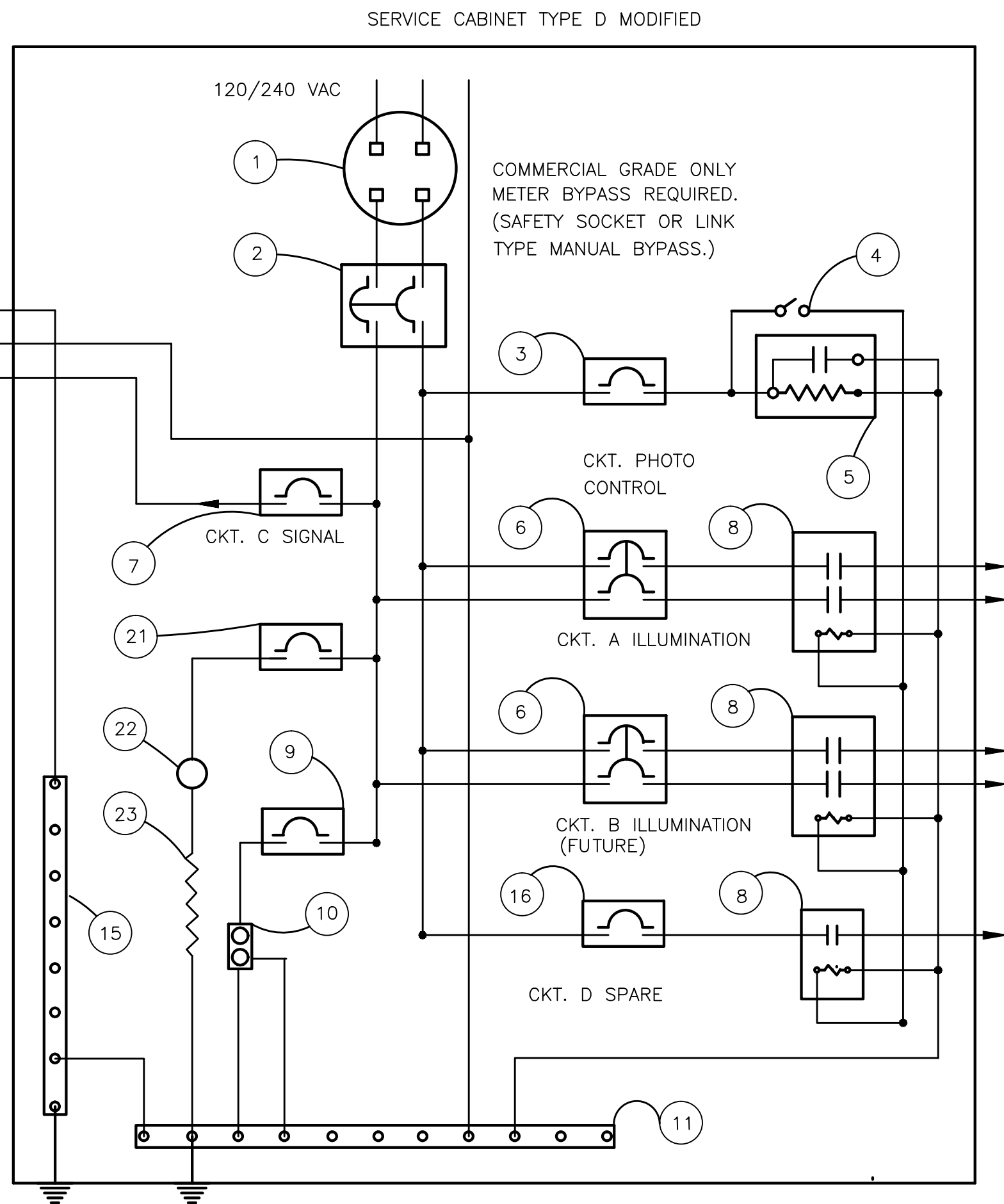
PHOTO CONTROL

N.T.C.

**SERVICE CABINET TYPE D MODIFIED
BREAKER SCHEDULE 120/240V**

CIRCUIT	DESCRIPTION	BREAKER RATING	CONTACTOR RATING	VOLTAGE	LOAD (KVA)
	MAIN	100 A	N.A.	240	N.A.
A	ILLUMINATION	30 A	30	240	2.0
B	ILLUMINATION	30 A	30	240	FUTURE
C	SIGNAL*	30 A	N.A.	120	2.4*
D	SPARE	20 A	N.A.	120	FUTURE
E	GFCI	20 A	N.A.	120	1.8
F	PHOTOCELL	15 A	N.A.	120	0.1
G	STRIP HEATER	15 A	N.A.	120	0.1
BUSSWORK SHALL BE RATED AT 250 AMP MINIMUM				PEAK	6.4
				CONTINUOUS	2.8

*SIGNAL CIRCUIT WILL NOT BE UTILIZED AS PART OF THIS PROJECT. INSTALL BREAKER FOR FUTURE USE.



**STAND ALONE SERVICE CABINET
TYPE D MODIFIED WITH PAD**

SNOHOMISH COUNTY
TRAFFIC ENGINEER
APPROVED FOR CONSTRUCTION
BY _____
JIM BLOODGOOD, P.E.



Parametrix
ENGINEERING · PLANNING · ENVIRONMENTAL SCIENCES
719 2ND AVENUE, SUITE 200 | SEATTLE, WA 98104
P 206.394.3700
WWW.PARAMETRIX.COM

PROJECT NAME
**MARINE DRIVE SHOULDER IMPROVEMENTS
PHASE 1: 7TH DRIVE NW TO 64TH STREET NW
THE TULALIP TRIBES**
TULALIP, WASHINGTON

**ILLUMINATION SERVICE
CABINET DETAILS**

811
Know what's below.
Call before you dig.
SHEET NO.
37 OF 40
IL9

REVISIONS	DATE	BY	DESIGNED
1			M. KENDALL
			M. KENDALL
			E. SCHOTT
			A. FISHER

ONE INCH AT FULL SCALE.
IF NOT, SCALE ACCORDINGLY.
FILE NAME
PS1598078P01T04-IL
JOB No.
54-1598-078 (01/05)
DATE
MAY 2016