

ADDENDUM NO. 1

March 6, 2020

Engineer:

Parametrix
1019 39th Avenue SE
Suite 100
Puyallup, Washington 98374

Owner:

The Tulalip Tribes
8802 27th Avenue NE
Tulalip, WA 98271-9694

VALVE CAN LID REPAIR AND MAINTENANCE

To: All Holders of the Bidding Documents, Contract Specifications, and Construction Drawings

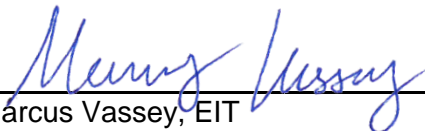
This Addendum forms a part of the Contract Documents and modifies the Bidding Documents, Contract Specifications, and Construction Drawings for the opening date of March 19, 2020.

Acknowledge receipt of this addendum on the Bid Proposal Form. Failure to do so may subject the Bidder to disqualification. This addendum consists of:

3 Pages of text (including this cover sheet)

38 Supplemental Drawings

Prepared by:



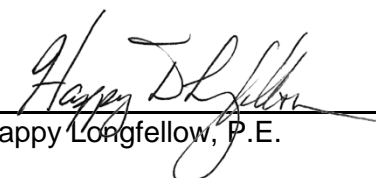
Marcus Vassey, EIT



Checked by:

John Lewis Wright III, P.E.

Approved by:



Happy Longfellow, P.E.

ADDENDUM NO. 1
VALVE CAN LID REPAIR AND MAINTENANCE
REVISIONS TO CONTRACT DOCUMENTS

DIVISION 0 – BIDDING REQUIREMENTS, CONTRACT FORMS, AND CONDITIONS OF CONTRACT

1. Bid Proposal Form

- a. The Bid Schedule, page BPF-3, is replaced with the attached replacement page BPF-3 labeled Addendum No. 1. Revisions include approximate quantity value changes for Locate Existing Utility Structure or Monument, Adjust Manhole to Grade, Adjust Valve to Grade, Replace Valve Box Lid, Hydrant Assembly, Monument Case and Cover, Poured Monument, and Remove and Replace Guard Post.

CONTRACT PLANS

1. Replace the Contract Plans (Sheets 1 through 36) with the attached replacement set of Contract Plans (Sheets 1 through 37) labeled Addendum No. 1. Revised Sheets include 1, 2, and 19; new Sheet 36 is added; and the original Sheets 36 and 37 are renumbered Sheets 37 and 38.

BID SCHEDULE

TULALIP TRIBES

VALVE CAN LID REPAIR AND MAINTENANCE

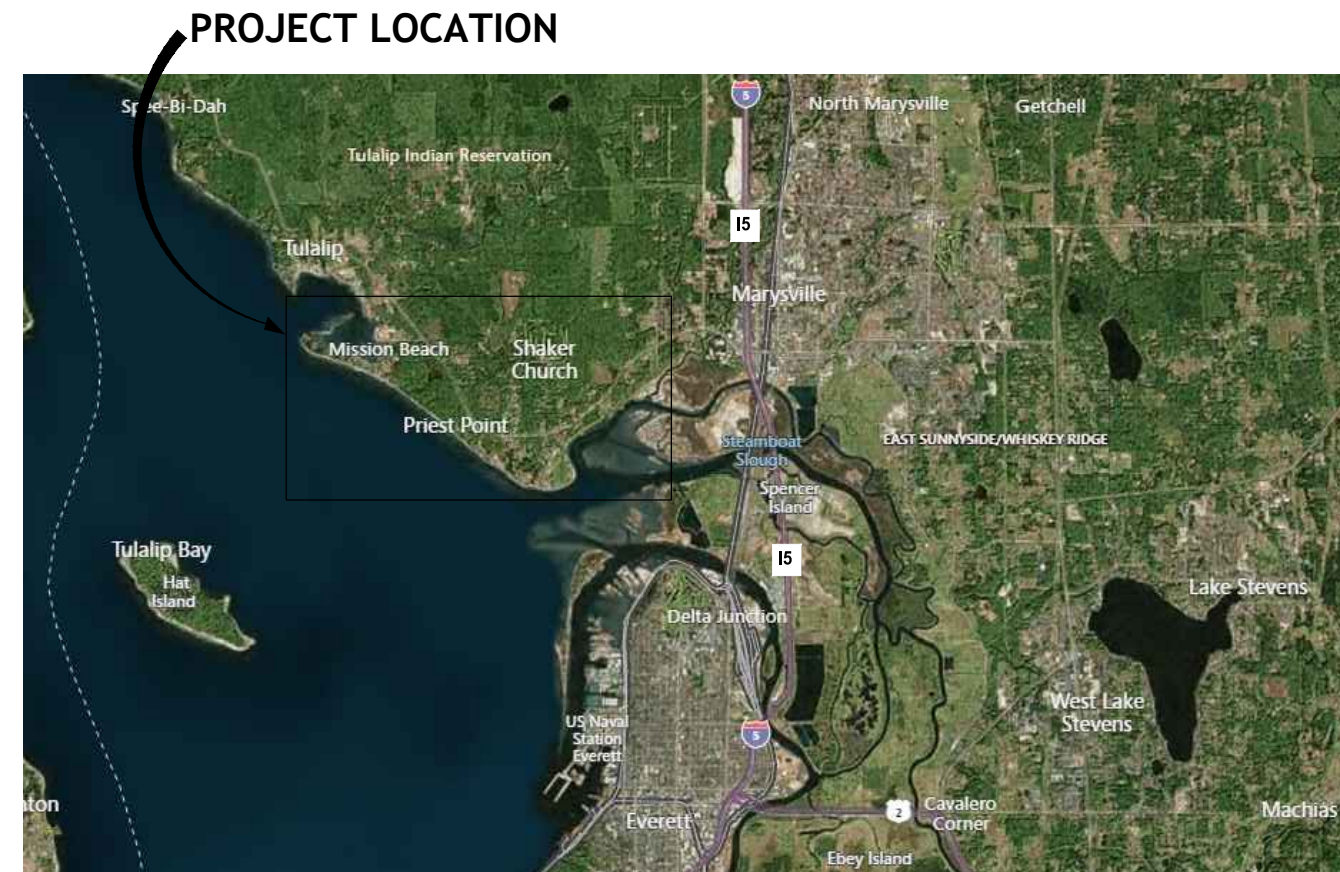
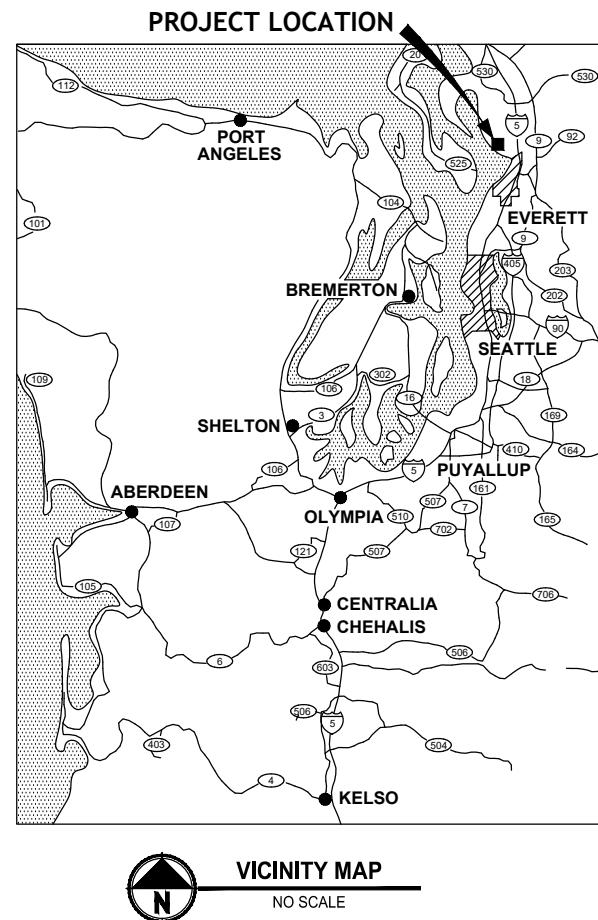
SCHEDULE OF PRICES

(Work Within Tribal Reservation Boundary
Washington State Sales Tax Does Not Apply)

ITEM NO.	SECTION	ITEM DESCRIPTION	UNIT	APPROX. QTY.	UNIT PRICE DOLLAR CENTS	AMOUNT DOLLAR CENTS
1	1-04	MINOR CHANGE	EST.	1	\$10,000	\$10,000
2	1-05	LICENSED SURVEYING	EACH	3	\$	\$
3	1-07	SPCC PLAN	LS	1	\$	\$
4	1-07	LOCATE EXISTING UTILITY STRUCTURE OR MONUMENT	EACH	35	\$	\$
5	1-09	MOBILIZATION	LS	1	\$	\$
6	1-10	PROJECT TEMPORARY TRAFFIC CONTROL	LS	1	\$	\$
7	2-01	CLEARING AND GRUBBING	LS	1	\$	\$
8	2-02	REMOVAL OF STRUCTURES AND OBSTRUCTIONS	LS	1	\$	\$
9	7-05	ADJUST MANHOLE TO GRADE	EACH	12	\$	\$
10	7-12	ADJUST VALVE TO GRADE	EACH	78	\$	\$
11	7-12	REPLACE VALVE BOX LID	EACH	7	\$	\$
12	7-14	HYDRANT ASSEMBLY	EACH	5	\$	\$
13	8-01	EROSION/WATER POLLUTION CONTROL	LS	1	\$	\$
14	8-13	MONUMENT CASE AND COVER	EACH	2	\$	\$
15	8-13	POURED MONUMENT	EACH	2	\$	\$
16	8-30	REMOVE AND REPLACE GUARD POST	EACH	4	\$	\$
Subtotal:					\$	
TERO (1.75%):						
TOTAL (Including TERO):					\$	

VALVE CAN REPAIR AND MAINTENANCE

TULALIP TRIBES PROJECT NO. 2019-065



DRAWING INDEX	
DWG NO.	SHEET TITLE
GENERAL	
1	COVER SHEET, DRAWING INDEX, LOCATION AND VICINITY MAPS
2	KEY MAP AND ABBREVIATIONS
CIVIL	
3-36	REPAIR LOCATION SHEETS
37	UTILITY AND MONUMENT DETAILS
38	UTILITY DETAILS

UTILITIES:

FRONTIER COMMUNICATIONS
1800 41ST STREET
EVERETT, WA 98201
OFFICE: (425) 261-0134
CELL: (425) 614-9754
CONTACT: ADAM DIAZ

SNOHOMISH COUNTY PUBLIC
UTILITIES DISTRICT (PUD)
210 E DIVISION STREET
ARLINGTON, WA 98223
OFFICE: (425) 783-4370
CONTACT: KALLEN SHAUGHNESSY-RANDALL

PUGET SOUND ENERGY (GAS)
PROJECT MANAGER - GAS SYSTEM ENGINEERING
20000 N CREEK PARKWAY, BOT-01H
BOTHELL, WA 98011
OFFICE: (425) 505-3768
CONTACT: JOHN GUAY

TULALIP BROADBAND (CABLE)
8825 QUIL CEDA BOULEVARD, SUITE O
TULALIP, WA 98271
OFFICE: (360) 716-3277
CELL: (425) 754-0033
CONTACT: RICHARD BROWN

TULALIP TECHNOLOGY DATA SERVICES
8825 QUIL CEDA BOULEVARD, SUITE O
TULALIP, WA 98271
(360) 716-5150
CONTACT: KEVIN JONES

TULALIP UTILITY AUTHORITY
3015 MISSION BEACH RD,
TULALIP, WA 98271
OFFICE: (360) 716-4840
CONTACT: AUDREY CHARLES (INTERIM MANAGER)

VERIZON
OSP ENGINEERING
PO BOX 1003
EVERETT, WA 98200
OFFICE: (425) 327-8118
CONTACT: TIM RENNICK

CITY OF MARYSVILLE WATER
MAINTENANCE LEAD
80 COLUMBIA AVENUE
MARYSVILLE, WA 98270
OFFICE: (360) 363-8163
CELL: (425) 754-2597
CONTACT: KIM BRYANT



<div style="border: 1px solid black; width: 20px; height: 20px; display: flex; align-items: center; justify-content: center;"> <div style="width: 10px; height: 10px; background-color: black;"></div> </div>	REVISIONS	DATE	BY	DESIGNED J. WRIGHT
	ADDENDUM #1 ADDITIONAL VALVE CANS	03/05/2020		DRAWN M. VASSEY
				CHECKED R. RAYMOND
				APPROVED

ONE INCH AT FULL SCALE. IF NOT, SCALE ACCORDINGLY	
FILE NAME	PS1598120G-01-03
JOB No.	554-1598-108 PHASE 15
DATE	NOVEMBER 2019



NOVEMBER 21, 2019

Parametrix
ENGINEERING . PLANNING . ENVIRONMENTAL SCIENCES

1019 39TH AVENUE SE, SUITE 100 | PUYALLUP, WA 98374
P 253.604.6600
WWW.PARAMETRIX.COM

PROJECT NAME

**VALVE CAN REPAIR
TULALIP TRIBES**

TULALIP, WASHINGTON

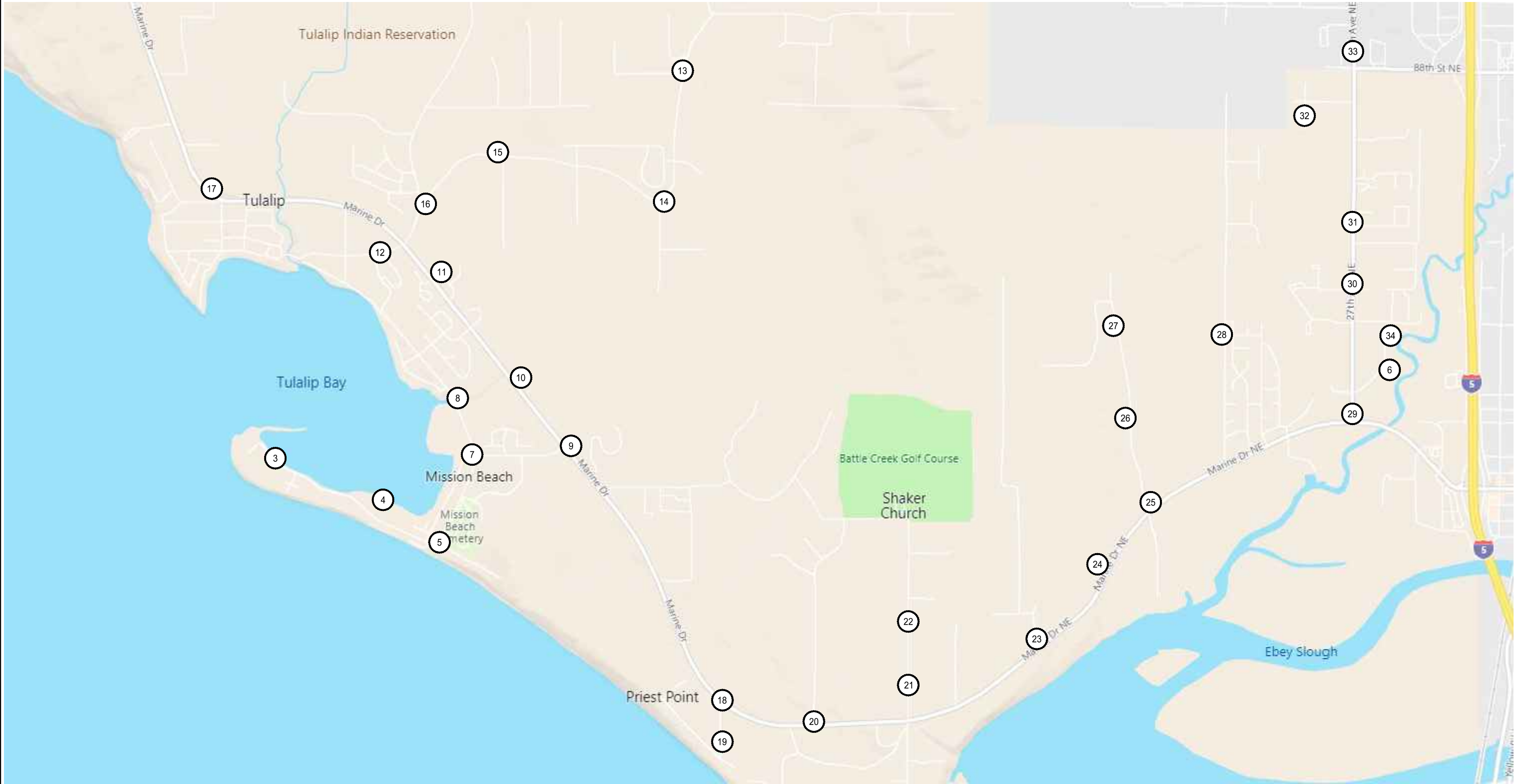
**COVER SHEET, DRAWING INDEX,
LOCATION AND VICINITY MAPS**

COVER



Know what's **below**.
Call before you dig.

LAYOUT: 2 PATH: U:\PSO\Projects\Clients\1598-Tulalip Tribes\1598-108 O Roadway Work Orders\102\WBS\PH15-ValveCan Repair\CADD - PLOTTED BY: vasesey DATE: Thursday, March 5, 2020 1:50:46 PM



LOCATION MAP
NO SCALE

LEGEND

SHEET NUMBER

ABBREVIATIONS

EA EACH

REVISIONS	DATE	BY	DESIGNED
ADDENDUM #1 ADDITIONAL VALVE CANS	03/05/2020		J. WRIGHT
			DRAWN M. VASSEY
			CHECKED R. RAYMOND
			APPROVED

ONE INCH AT FULL SCALE. IF NOT, SCALE ACCORDINGLY
FILE NAME PS1598120G-01-03
JOB No. 554-1598-108 PHASE 15
DATE NOVEMBER 2019



NOVEMBER 21, 2019

Parametrix
ENGINEERING · PLANNING · ENVIRONMENTAL SCIENCES

10119 39TH AVENUE SE, SUITE 100 | PUYALLUP, WA 98374
P 253.604.6600
WWW.PARAMETRIX.COM

PROJECT NAME
VALVE CAN REPAIR TULALIP TRIBES
TULALIP, WASHINGTON

KEY MAP AND ABBREVIATONS

COVER
2

Tulalip Tribes Planning



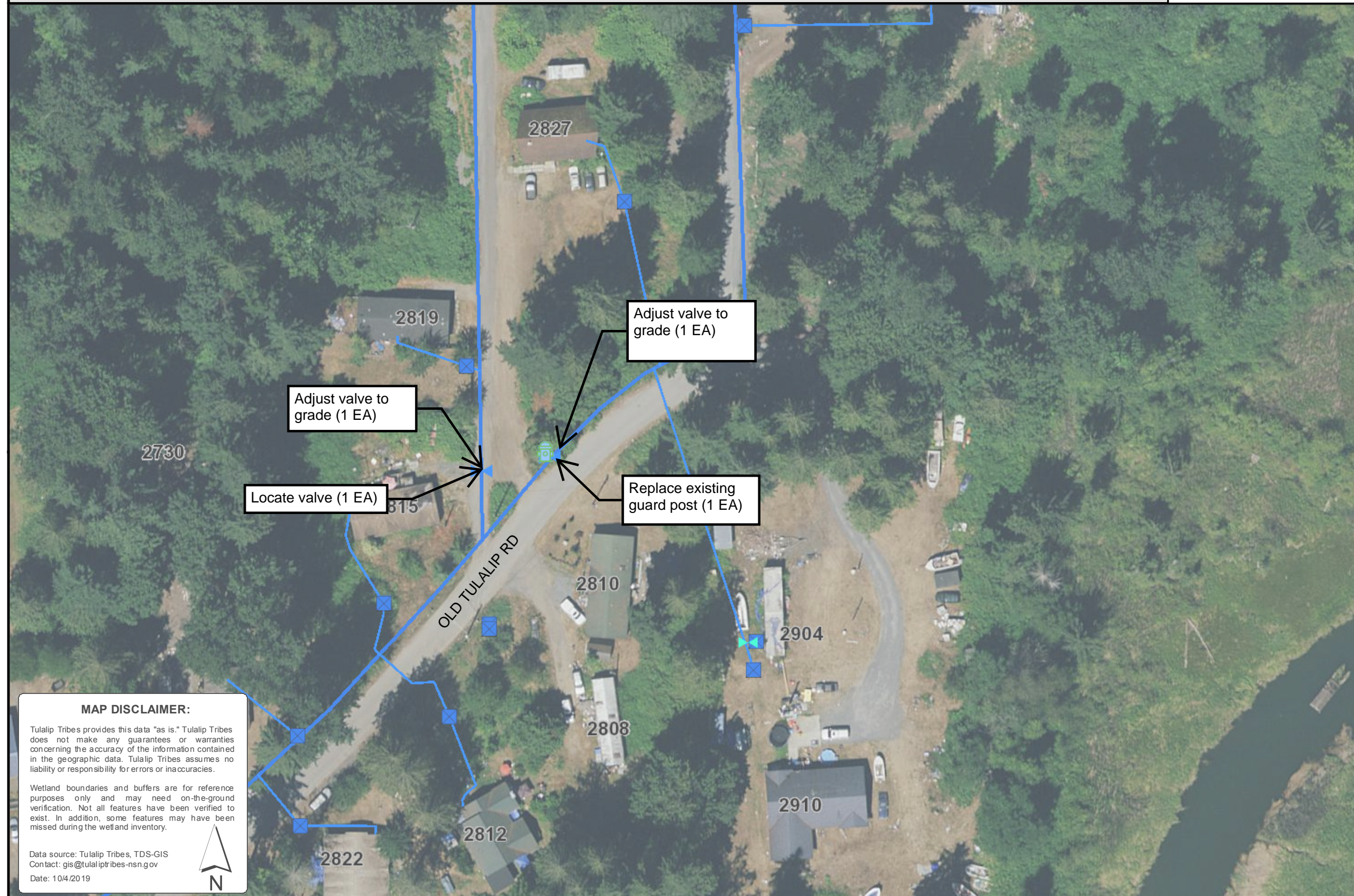
Tulalip Tribes Planning



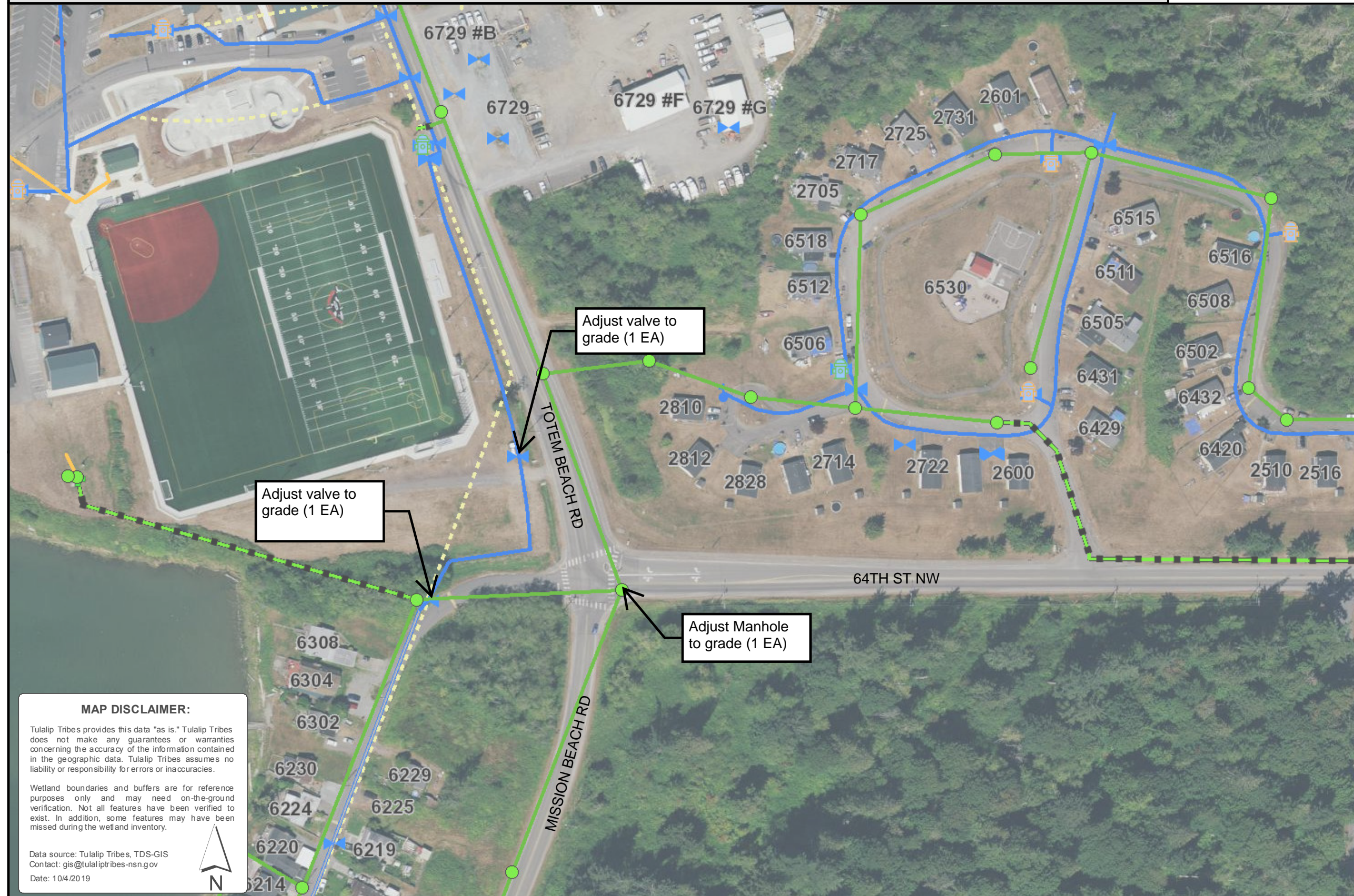
Tulalip Tribes Planning



Tulalip Tribes Planning



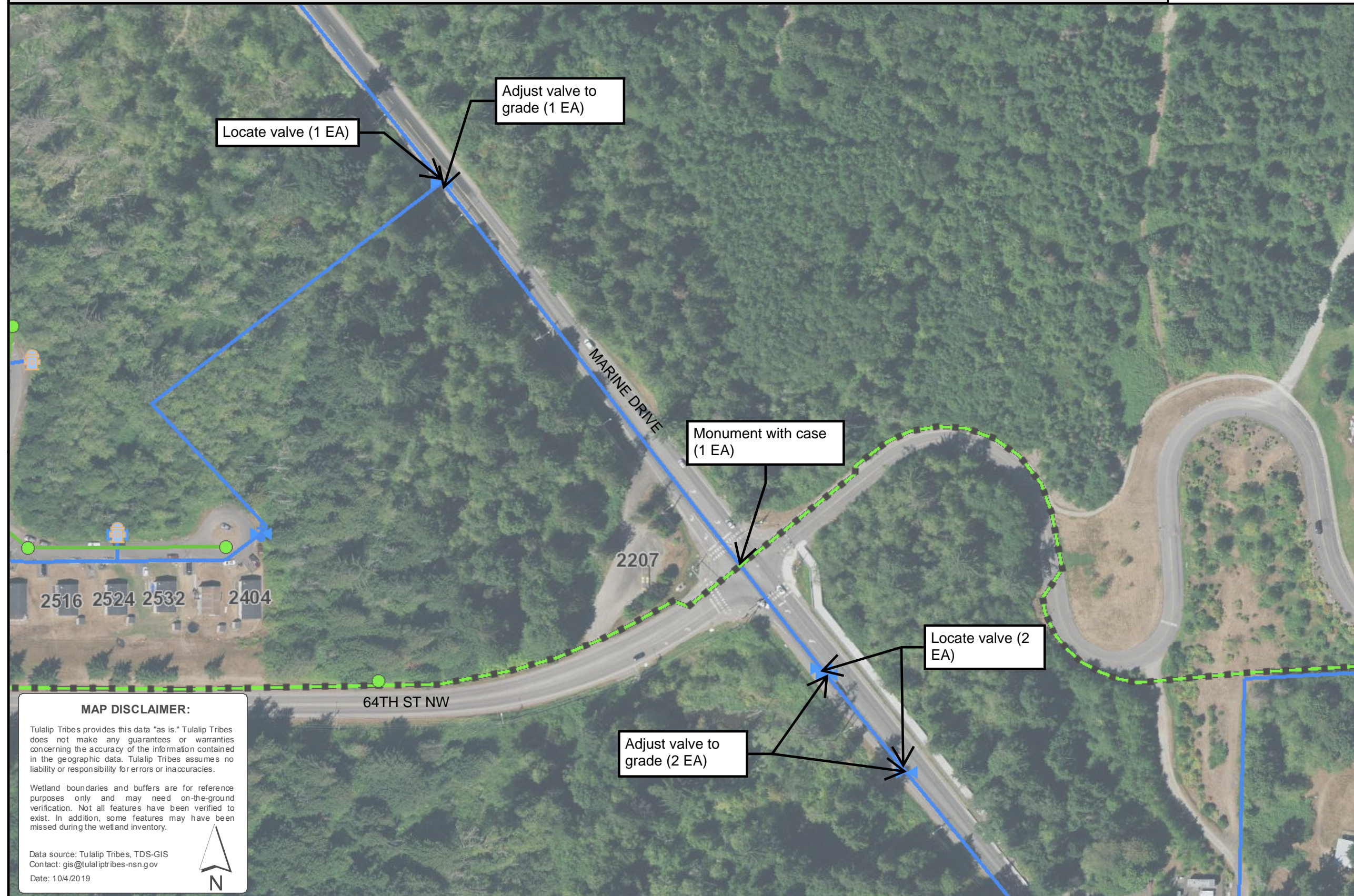
Tulalip Tribes Planning



Tulalip Tribes Planning



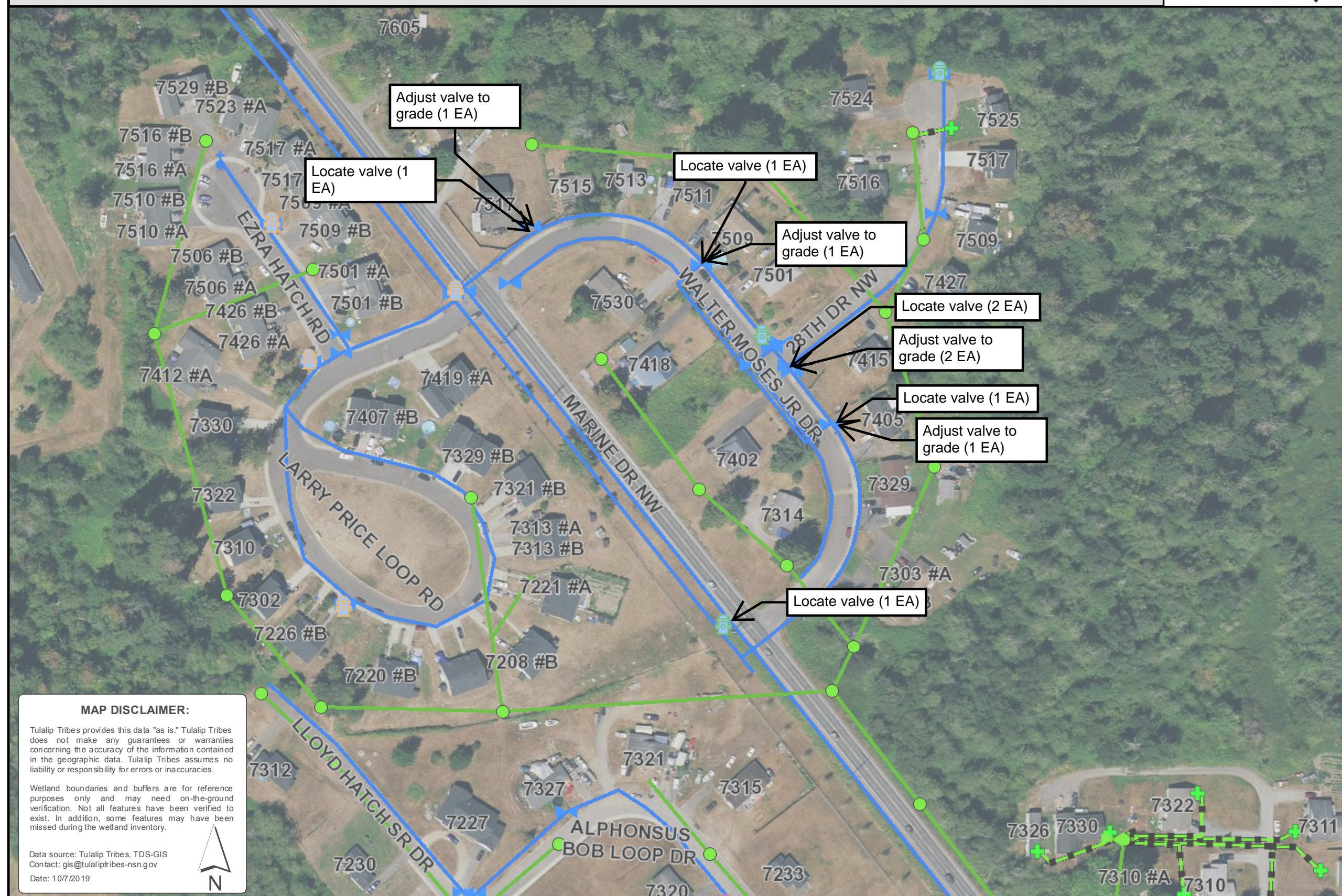
Tulalip Tribes Planning



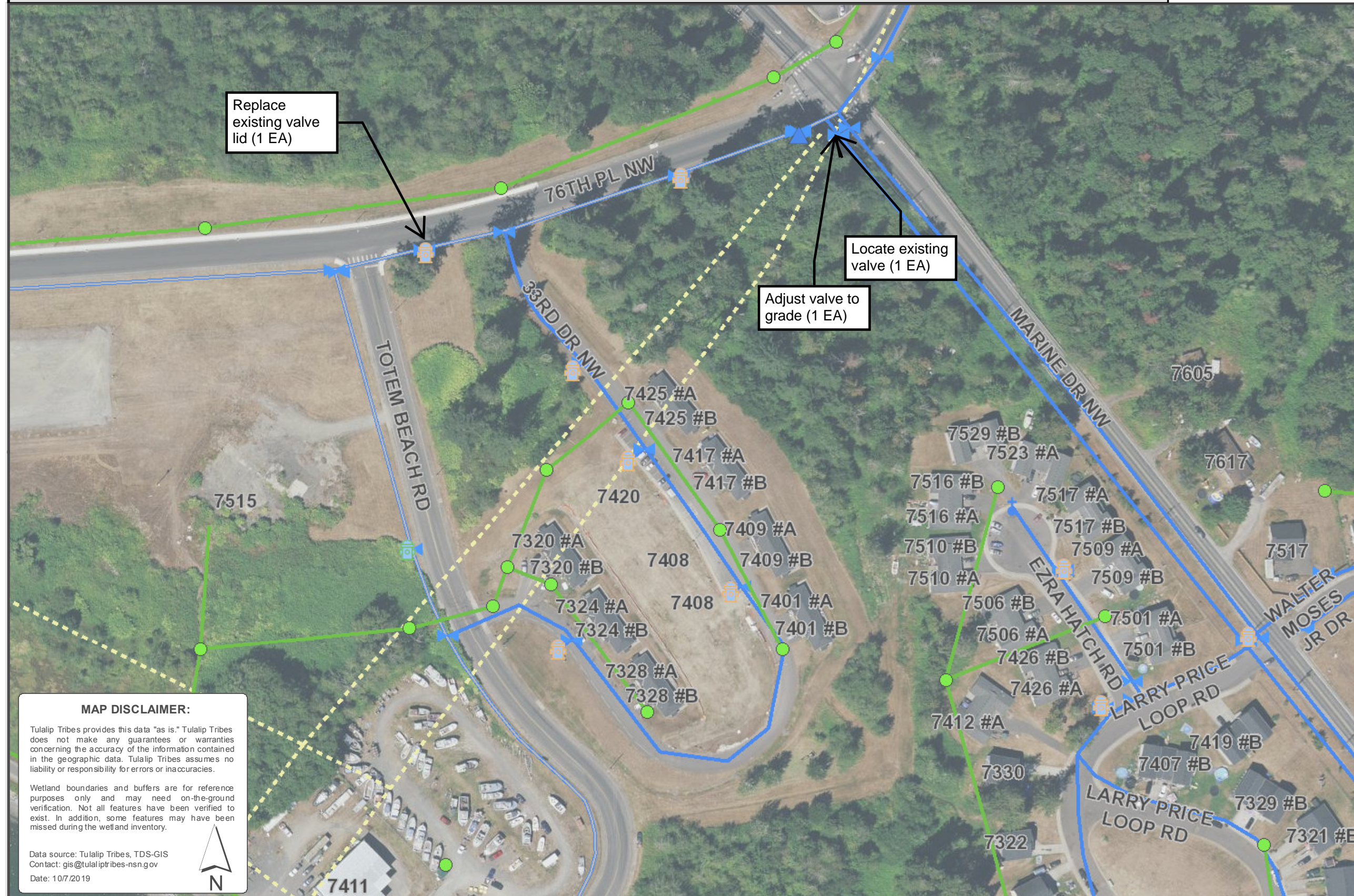
Tulalip Tribes Planning



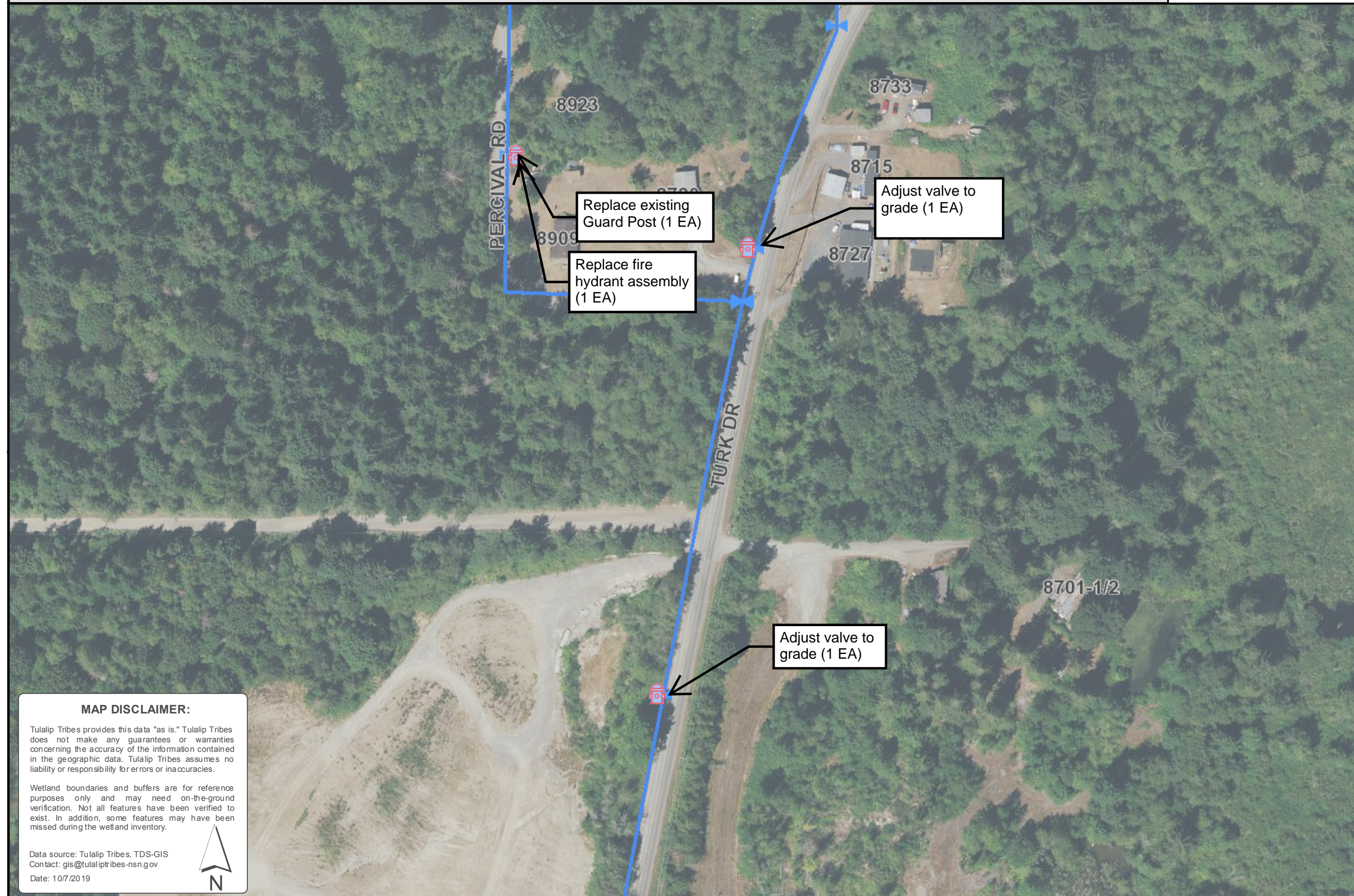
Tulalip Tribes Planning



Tulalip Tribes Planning



Tulalip Tribes Planning



Tulalip Tribes Planning



MAP DISCLAIMER:

Tulalip Tribes provides this data "as is." Tulalip Tribes does not make any guarantees or warranties concerning the accuracy of the information contained in the geographic data. Tulalip Tribes assumes no liability or responsibility for errors or inaccuracies.

Wetland boundaries and buffers are for reference purposes only and may need on-the-ground verification. Not all features have been verified to exist. In addition, some features may have been missed during the wetland inventory.

Data source: Tulalip Tribes, TDS-GIS
Contact: gis@tulaliptribes-nsn.gov
Date: 10/7/2019



Tulalip Tribes Planning



Tulalip Tribes Planning



Tulalip Tribes Planning



Tulalip Tribes Planning



Tulalip Tribes Planning



Tulalip Tribes Planning



Tulalip Tribes Planning



MAP DISCLAIMER:

Tulalip Tribes provides this data "as is." Tulalip Tribes does not make any guarantees or warranties concerning the accuracy of the information contained in the geographic data. Tulalip Tribes assumes no liability or responsibility for errors or inaccuracies.

Wetland boundaries and buffers are for reference purposes only and may need on-the-ground verification. Not all features have been verified to exist. In addition, some features may have been missed during the wetland inventory.

Data source: Tulalip Tribes, TDS-GIS
Contact: gis@tulaliptribes-nsn.gov
Date: 10/7/2019



Tulalip Tribes Planning



Tulalip Tribes Planning



MAP DISCLAIMER:

Tulalip Tribes provides this data "as is." Tulalip Tribes does not make any guarantees or warranties concerning the accuracy of the information contained in the geographic data. Tulalip Tribes assumes no liability or responsibility for errors or inaccuracies.

Wetland boundaries and buffers are for reference purposes only and may need on-the-ground verification. Not all features have been verified to exist. In addition, some features may have been missed during the wetland inventory.

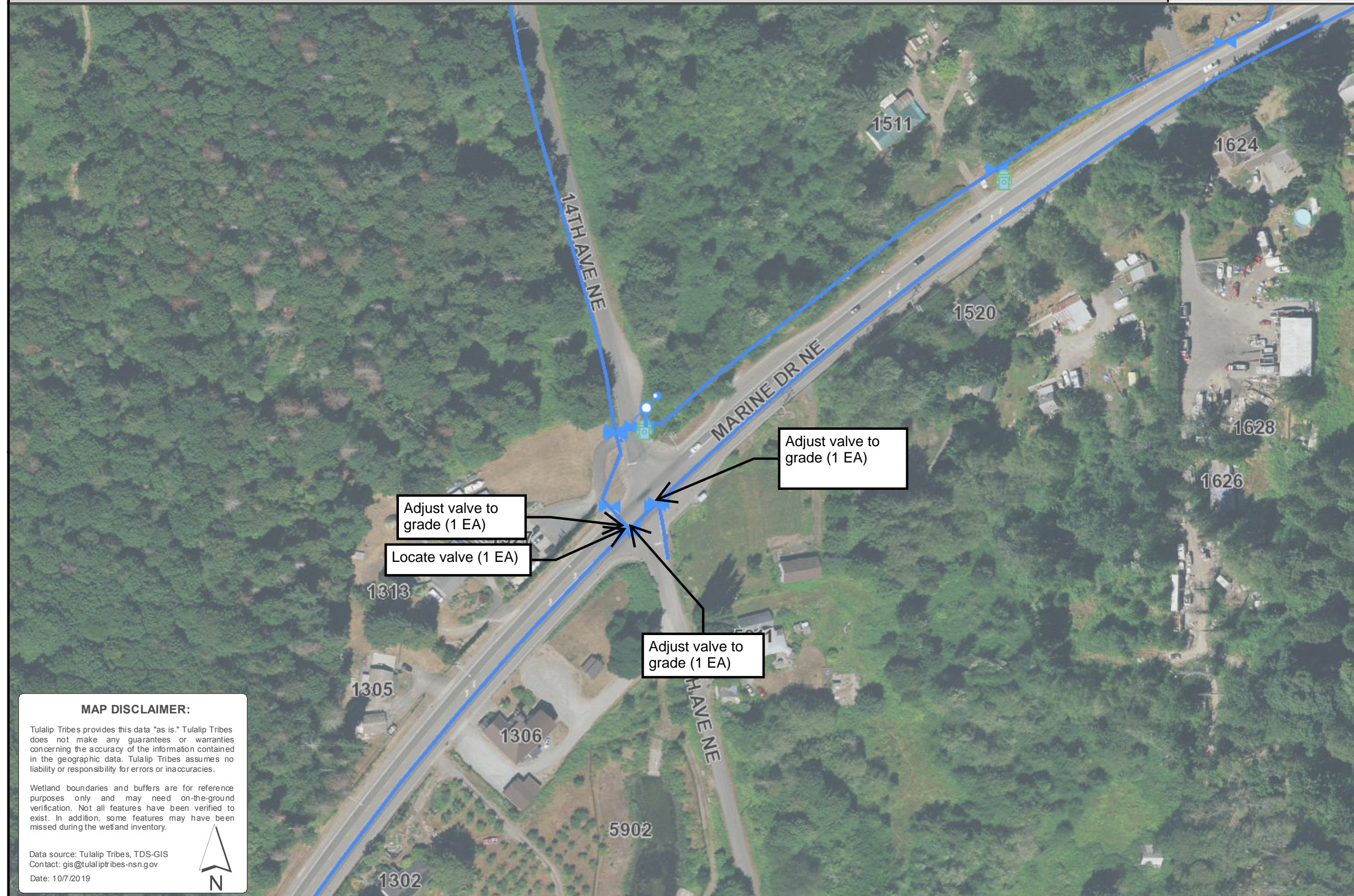
Data source: Tulalip Tribes, TDS-GIS
Contact: gis@tulaliptribes-nsn.gov
Date: 10/7/2019



Tulalip Tribes Planning



Tulalip Tribes Planning



MAP DISCLAIMER:

Tulalip Tribes provides this data "as is." Tulalip Tribes does not make any guarantees or warranties concerning the accuracy of the information contained in the geographic data. Tulalip Tribes assumes no liability or responsibility for errors or inaccuracies.

Wetland boundaries and buffers are for reference purposes only and may need on-the-ground verification. Not all features have been verified to exist. In addition, some features may have been missed during the wetland inventory.

Data source: Tulalip Tribes, TDS-GIS
Contact: gis@tulaliptribes-nsn.gov
Date: 10/7/2019



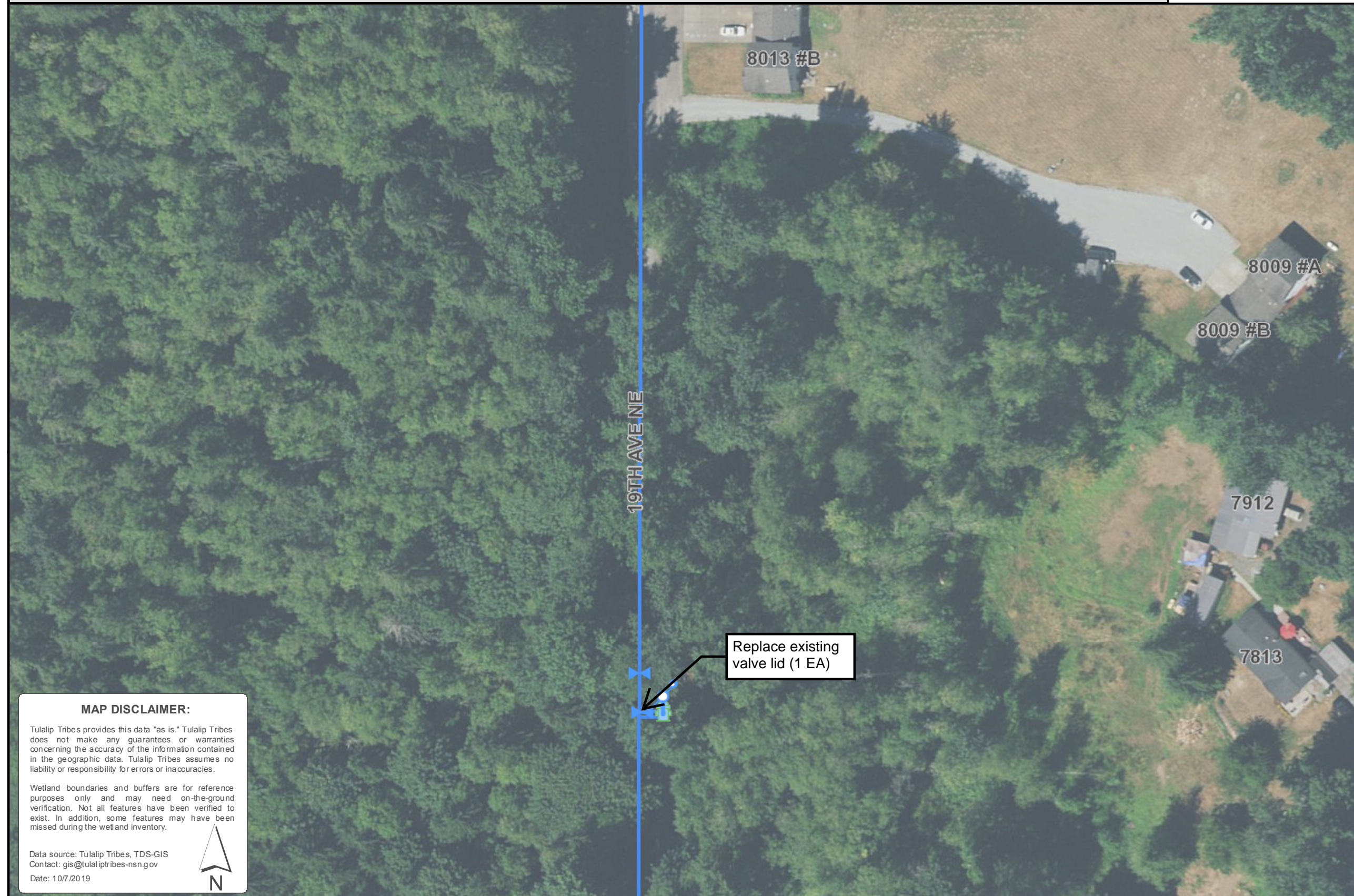
Tulalip Tribes Planning



Tulalip Tribes Planning



Tulalip Tribes Planning



MAP DISCLAIMER:

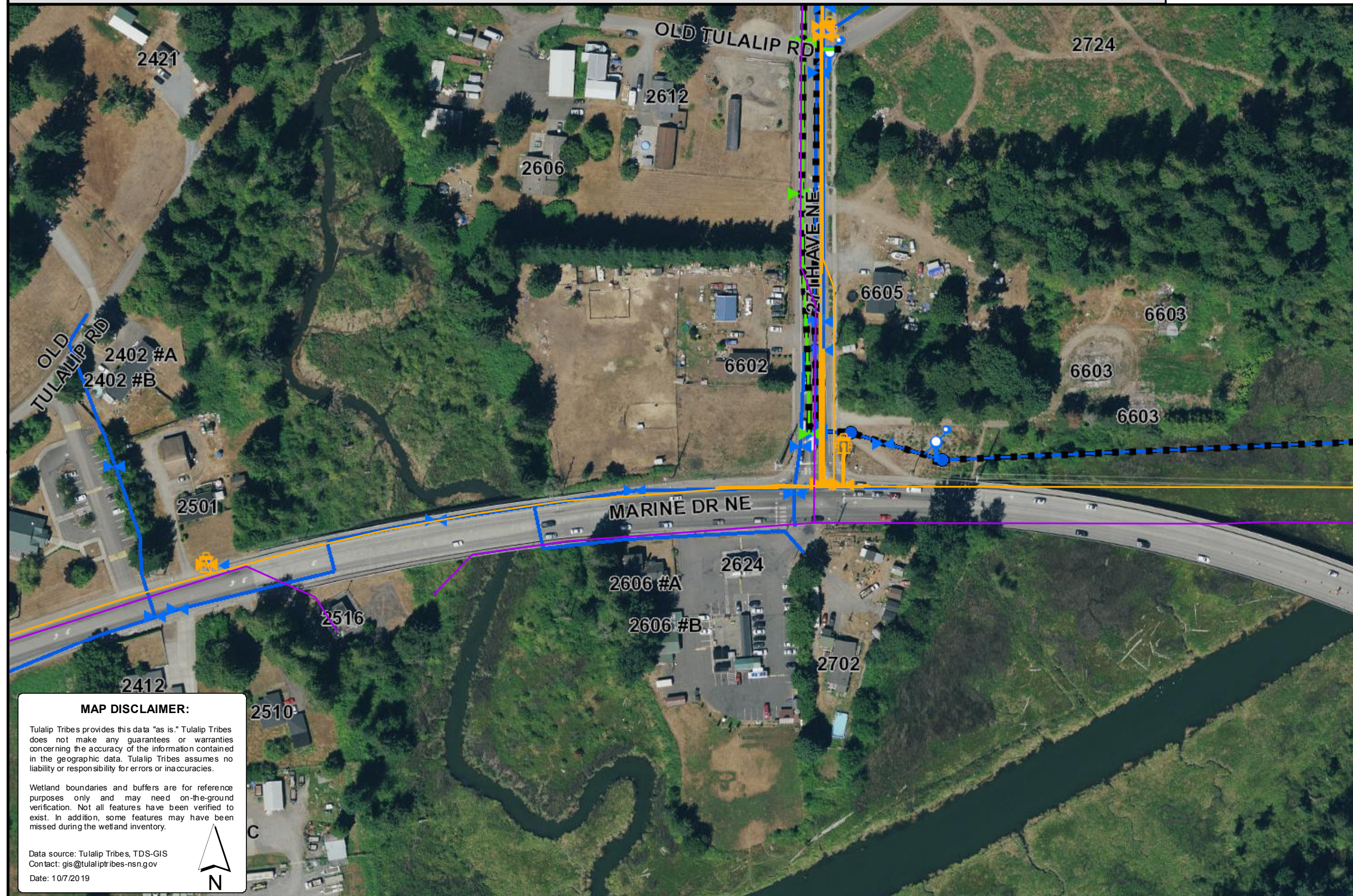
Tulalip Tribes provides this data "as is." Tulalip Tribes does not make any guarantees or warranties concerning the accuracy of the information contained in the geographic data. Tulalip Tribes assumes no liability or responsibility for errors or inaccuracies.

Wetland boundaries and buffers are for reference purposes only and may need on-the-ground verification. Not all features have been verified to exist. In addition, some features may have been missed during the wetland inventory.

Data source: Tulalip Tribes, TDS-GIS
Contact: gis@tulaliptribes-nsn.gov
Date: 10/7/2019



Tulalip Tribes Planning



Tulalip Tribes Planning



MAP DISCLAIMER:

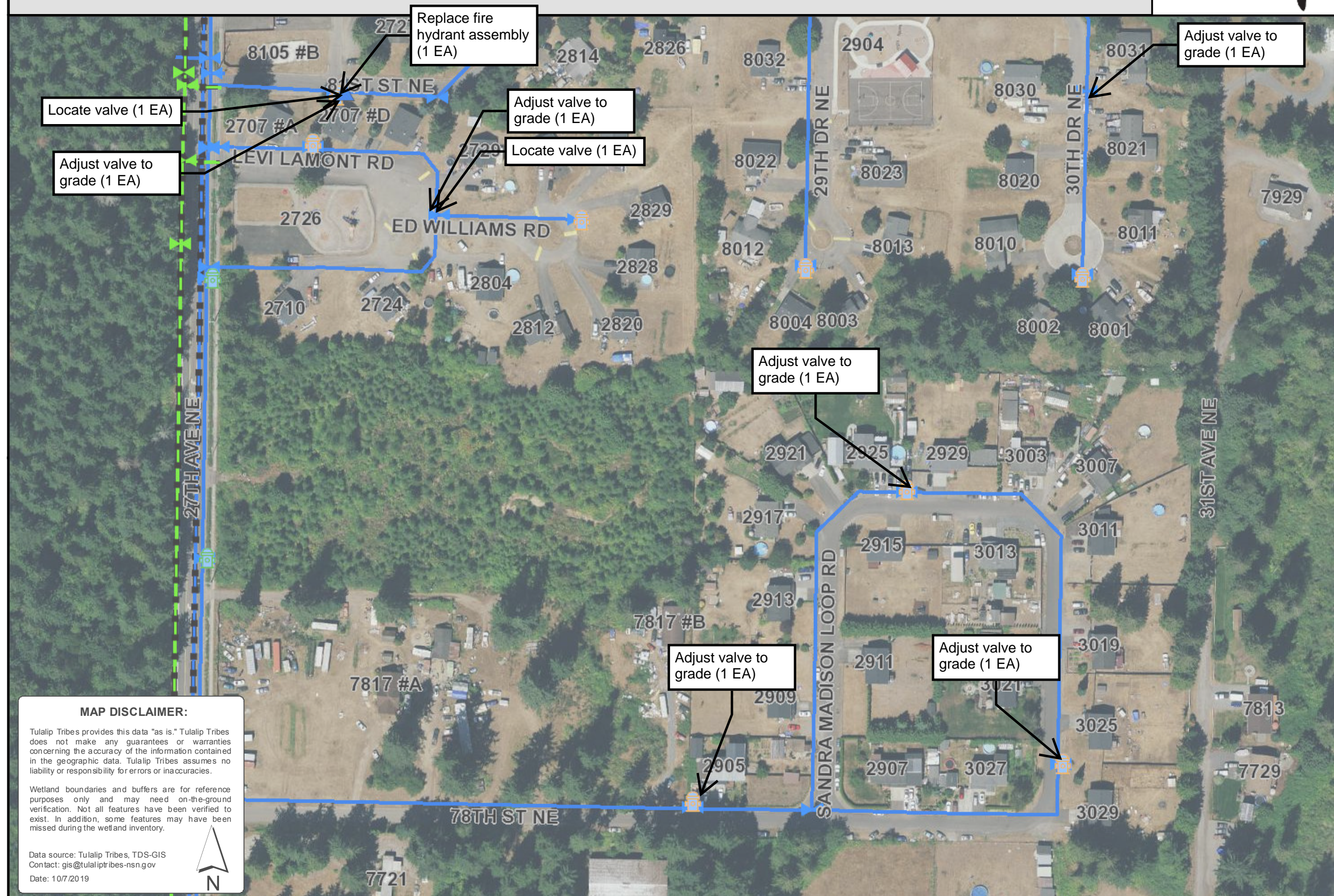
Tulalip Tribes provides this data "as is." Tulalip Tribes does not make any guarantees or warranties concerning the accuracy of the information contained in the geographic data. Tulalip Tribes assumes no liability or responsibility for errors or inaccuracies.

Wetland boundaries and buffers are for reference purposes only and may need on-the-ground verification. Not all features have been verified to exist. In addition, some features may have been missed during the wetland inventory.

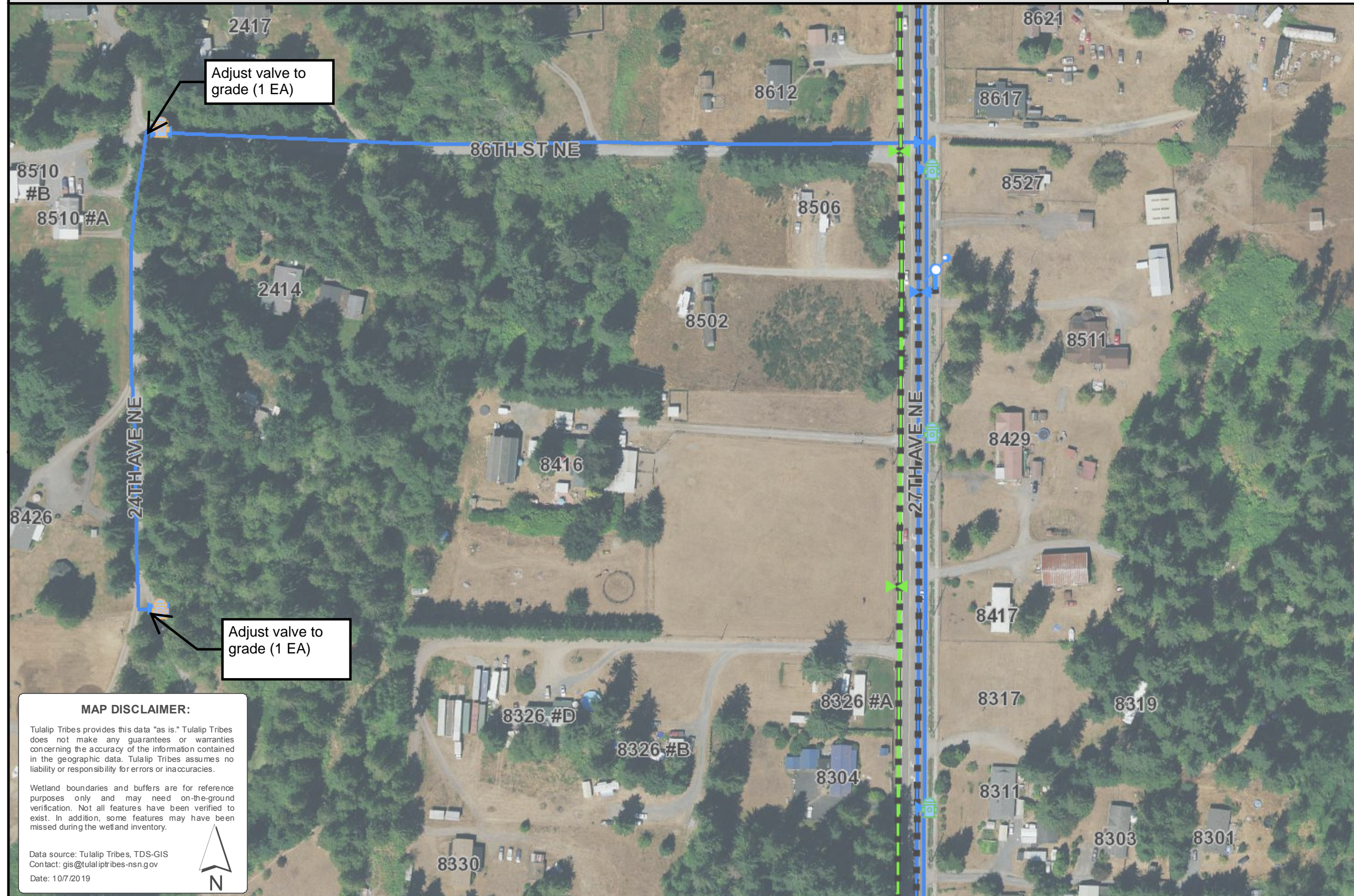
Data source: Tulalip Tribes, TDS-GIS
Contact: gis@tulaliptribes-nsn.gov
Date: 10/7/2019



Tulalip Tribes Planning



Tulalip Tribes Planning



MAP DISCLAIMER:

Tulalip Tribes provides this data "as is." Tulalip Tribes does not make any guarantees or warranties concerning the accuracy of the information contained in the geographic data. Tulalip Tribes assumes no liability or responsibility for errors or inaccuracies.

Wetland boundaries and buffers are for reference purposes only and may need on-the-ground verification. Not all features have been verified to exist. In addition, some features may have been missed during the wetland inventory.

Data source: Tulalip Tribes, TDS-GIS
Contact: gis@tulaliptribes-nsn.gov
Date: 10/7/2019





Tulalip Tribes Planning



Tulalip Tribes Planning



MAP DISCLAIMER:

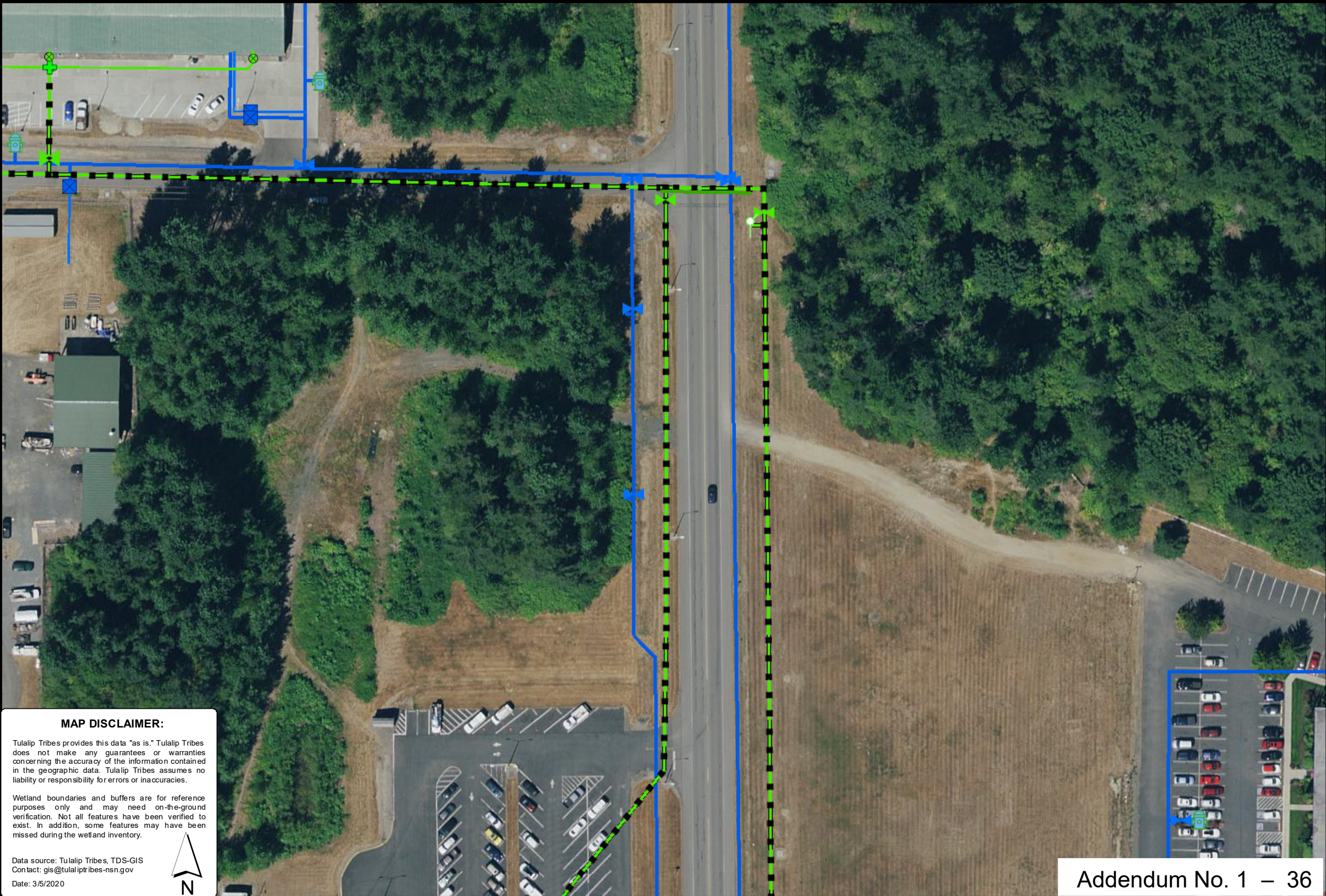
Tulalip Tribes provides this data "as is." Tulalip Tribes does not make any guarantees or warranties concerning the accuracy of the information contained in the geographic data. Tulalip Tribes assumes no liability or responsibility for errors or inaccuracies.

Wetland boundaries and buffers are for reference purposes only and may need on-the-ground verification. Not all features have been verified to exist. In addition, some features may have been missed during the wetland inventory.

Data source: Tulalip Tribes, TDS-GIS
Contact: gis@tulaliptribes-nsn.gov
Date: 1/27/2020



Tulalip Tribes



MAP DISCLAIMER:

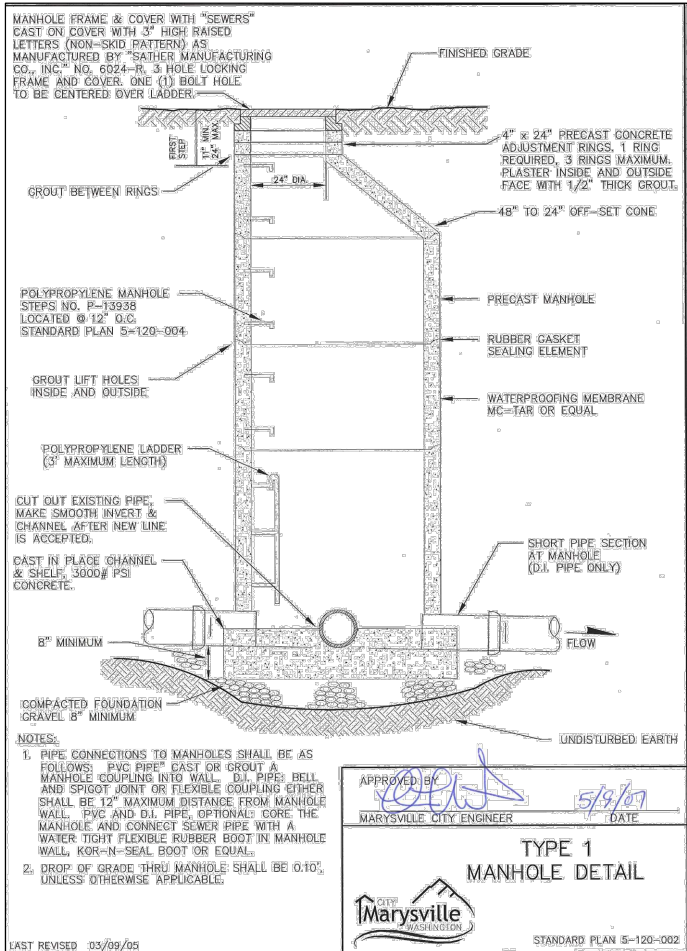
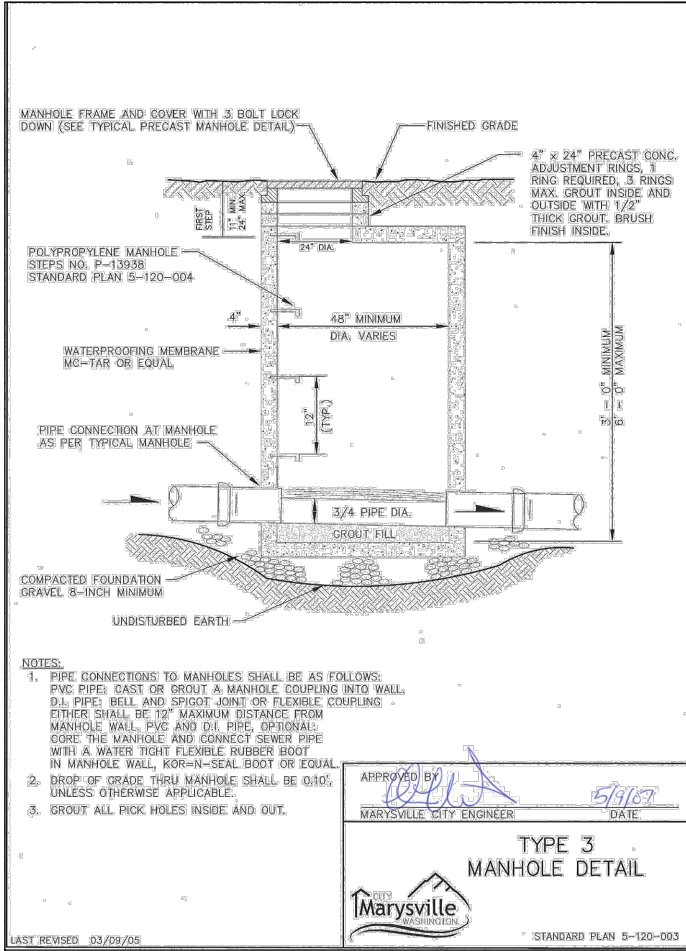
Tulalip Tribes provides this data "as is." Tulalip Tribes does not make any guarantees or warranties concerning the accuracy of the information contained in the geographic data. Tulalip Tribes assumes no liability or responsibility for errors or inaccuracies.

Wetland boundaries and buffers are for reference purposes only and may need on-the-ground verification. Not all features have been verified to exist. In addition, some features may have been missed during the wetland inventory.

Data source: Tulalip Tribes, TDS-GIS
Contact: gis@tulaliptribes-nsn.gov
Date: 3/5/2020



LAYOUT: 36 PATH: I:\P\O\Projects\Clients\1598-Tulalip\Drawings\554-1598-108 Q Roadway Work Orders\02\MS\PH15-ValveCan Repair\CADD3 PLOTTED BY: vasasmar DATE: Thursday, March 5, 2020 2:01:41 PM



REVISIONS	DATE	BY	DESIGNED
ADDENDUM #1 ADDITIONAL VALVE CANS	03/05/2020		J. WRIGHT
			DRAWN M. VASSEY
			CHECKED R. RAYMOND
			APPROVED

ONE INCH AT FULL SCALE. IF NOT, SCALE ACCORDINGLY
FILE NAME PS1598120G-01-03
JOB No. 554-1598-108 PHASE 15
DATE NOVEMBER 2019



NOVEMBER 21, 2019

Parametrix
ENGINEERING · PLANNING · ENVIRONMENTAL SCIENCES

10119 39TH AVENUE SE, SUITE 100 | PUYALLUP, WA 98374
P 253.604.6600
WWW.PARAMETRIX.COM

PROJECT NAME
VALVE CAN REPAIR TULALIP TRIBES
TULALIP, WASHINGTON

UTILITY DETAILS

COVER
38